

Release Notes

WiNG Manager 1.0.11

IMPORTANT

This is a maintenance release that extends the expiry date of the WiNG Manager application and thereby avoids the flash error. The Windows version expires on February 22nd, 2027.

Contents

New Features.....	3
WiNG Manager v1.0.11.....	3
Issues Fixed.....	3
Known Issues.....	3
System Requirements.....	3
WiNG Manager v1.0.10.....	3
Issues Fixed.....	3
Known Issues.....	3
System Requirements.....	3
WiNG Manager v1.0.9.....	4
Issues Fixed.....	4
Known Issues.....	4
System Requirements.....	4
WiNG Manager v1.0.8.....	4
Issues Fixed.....	5
Known Issues.....	5
System Requirements.....	5
WiNG Manager v1.0.7.....	5
Issues Fixed.....	5
Known Issues.....	5
System Requirements.....	5
Screenshots.....	6
WiNG Manager v1.0.6.....	7
Issues Fixed.....	7
Known Issues.....	7
System Requirements.....	8

WiNG Manager v1.0.5	8
Issues Fixed.....	8
Known Issues	8
System Requirements	8
WiNG Manager v1.0.4	8
Issues Fixed.....	8
Known Issues	9
System Requirements.....	9
WiNG Manager v1.0.2	9
Highlights.....	9
Screenshots	9
System Requirements.....	12
Platforms Support	12
Notes	12

New Features

WiNG Manager v1.0.11

This release of WiNG Manager extends the expiry date by Two more years and thereby avoids the Flash error. The Windows version expires on February 22nd, 2027.

The Wing Manager Mac OS version is NOT released in the current release, it will be released at a later date before March 17th, 2025.

IMPORTANT – Uninstall existing versions of Windows version before installing v1.0.11.

Issues Fixed

ESR/WOS	Description
WOSMGR-17	Renew WiNG Manager 2025 License (Windows)

Known Issues

ESR/WOS	Description
WING-43796	WiNG Manager - unable to use in China
WOSMGR-5	Hitting Enter in Connect textbox should initiate connection

System Requirements

- Microsoft® Windows™ 10 (local or hosted)
 - Windows 10
 - HDD 100 MB
 - RAM 4 GB

WiNG Manager v1.0.10

This release of WiNG Manager extends the expiry date by one more year and thereby avoids the Flash error. The Windows version expires on February 22nd, 2025 and MacOS version expires on March 17th, 2025.

IMPORTANT – Uninstall all existing versions of Windows/MacOS versions before installing v1.0.10.

Issues Fixed

ESR/WOS	Description
WOSMGR-16	Renew WiNG Manager 2024 License (Mac and Windows)

Known Issues

ESR/WOS	Description
WING-43796	WiNG Manager - unable to use in China
WOSMGR-5	Hitting Enter in Connect textbox should initiate connection

System Requirements

- Microsoft® Windows™ 10 (local or hosted)

- Windows 10
- HDD 100 MB
- RAM 4 GB
- Apple MacOS
 - Catalina+
 - HDD 100 MB
 - RAM 4 GB
 - Rosetta (for Mac with Apple Silicon)

WiNG Manager v1.0.9

This release of WiNG Manager extends the expiry date by one more year and thereby avoids the Flash error. The Windows version expires on February 22nd, 2024 and MacOS version expires on March 17th, 2024.

IMPORTANT – Uninstall all existing versions of Windows/MacOS versions before installing v1.0.9.

Issues Fixed

ESR/WOS	Description
WOSMGR-15	Renew WiNG Manager 2023 License (Mac and Windows)

Known Issues

ESR/WOS	Description
WING-43796	WiNG Manager unable to use in China
WOSMGR-5	Hitting Enter in Connect textbox should initiate connection

System Requirements

- Microsoft® Windows™ 10 (local or hosted)
 - Windows 10
 - HDD 100 MB
 - RAM 4 GB
- Apple MacOS
 - Catalina+
 - HDD 100 MB
 - RAM 4 GB
 - Rosetta (for Mac with Apple Silicon)

WiNG Manager v1.0.8

This release of WiNG Manager extends the expiry date by one more year and thereby avoids the Flash error. The Windows version expires on February 23rd, 2023 and MacOS version expires on March 31st, 2023.

IMPORTANT – Uninstall all existing versions of Windows/MacOS versions before installing v1.0.8.

Issues Fixed

ESR/WOS	Description
WOSMGR-14	Update Wing Manager with the latest binaries having extended expiry date

Known Issues

ESR/WOS	Description
WING-43796	WiNG Manager unable to use in China
WOSMGR-5	Hitting Enter in Connect textbox should initiate connection

System Requirements

- Microsoft® Windows™ 10 (local or hosted)
 - Windows 10
 - HDD 100 MB
 - RAM 4 GB
- Apple MacOS
 - Catalina+
 - HDD 100 MB
 - RAM 4 GB
 - Rosetta (for Mac with Apple Silicon)

WiNG Manager v1.0.7

This release of WiNG Manager fixes usability related issues reported by customers. WiNG Manager is also released on MacOS platform.

IMPORTANT – Uninstall all existing versions of Windows/MacOS versions before installing v1.0.7.

Issues Fixed

ESR	Description
CFD-6448	WiNG-Manager 1.06 - Need a Close button for Recent Connections list
CFD-6447	WiNG-Manager 1.06 - Customer wants CANCEL button to stop login attempt that is whitescreening
CFD-6446	WiNG-Manager 1.06 - Undefined connection appears to corrupt the list and no more connections can be added
WOSMGR-8	Support for MacOS

Known Issues

ESR	Description
WING-43796	WiNG Manager unable to use in China
WOSMGR-5	Hitting Enter in Connect textbox should initiate connection

System Requirements

- Microsoft® Windows™ 10 (local or hosted)
 - Windows 10
 - HDD 100 MB
 - RAM 4 GB

- Apple MacOS
 - Catalina+
 - HDD 100 MB
 - RAM 4 GB
 - Rosetta (for Mac with Apple Silicon)

Screenshots

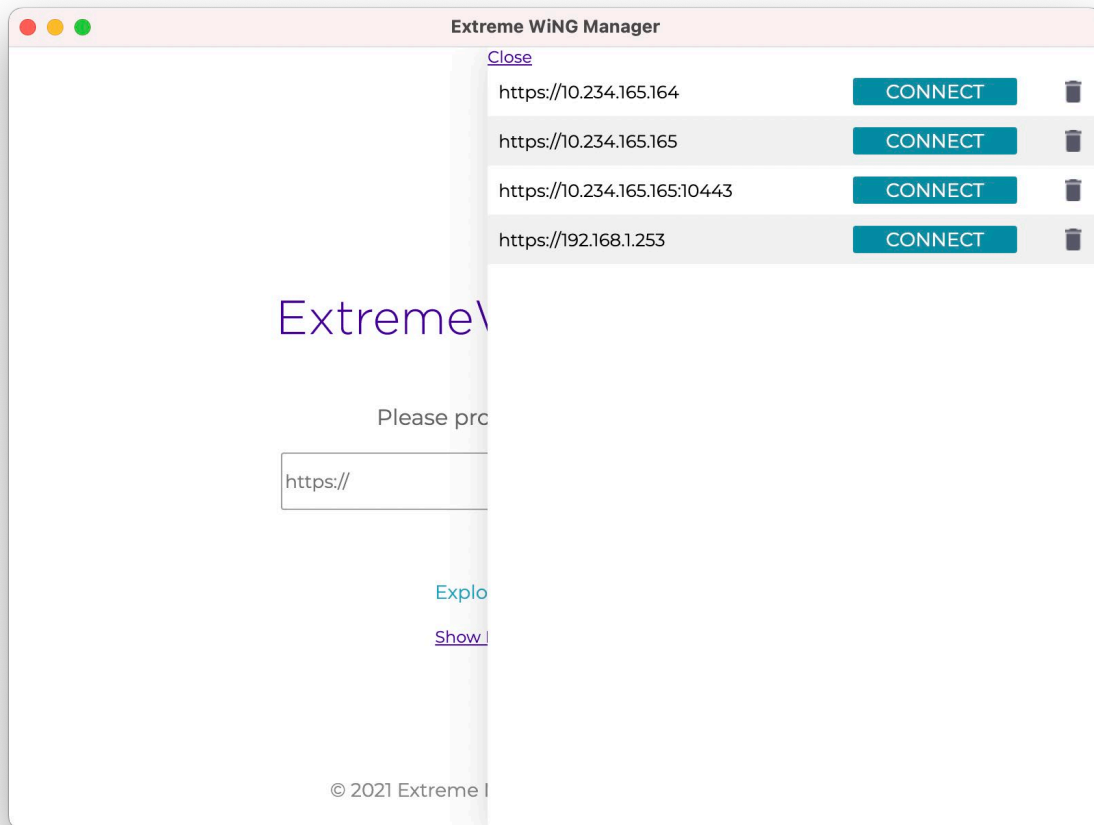


Figure 1 Close button available in Quick Links

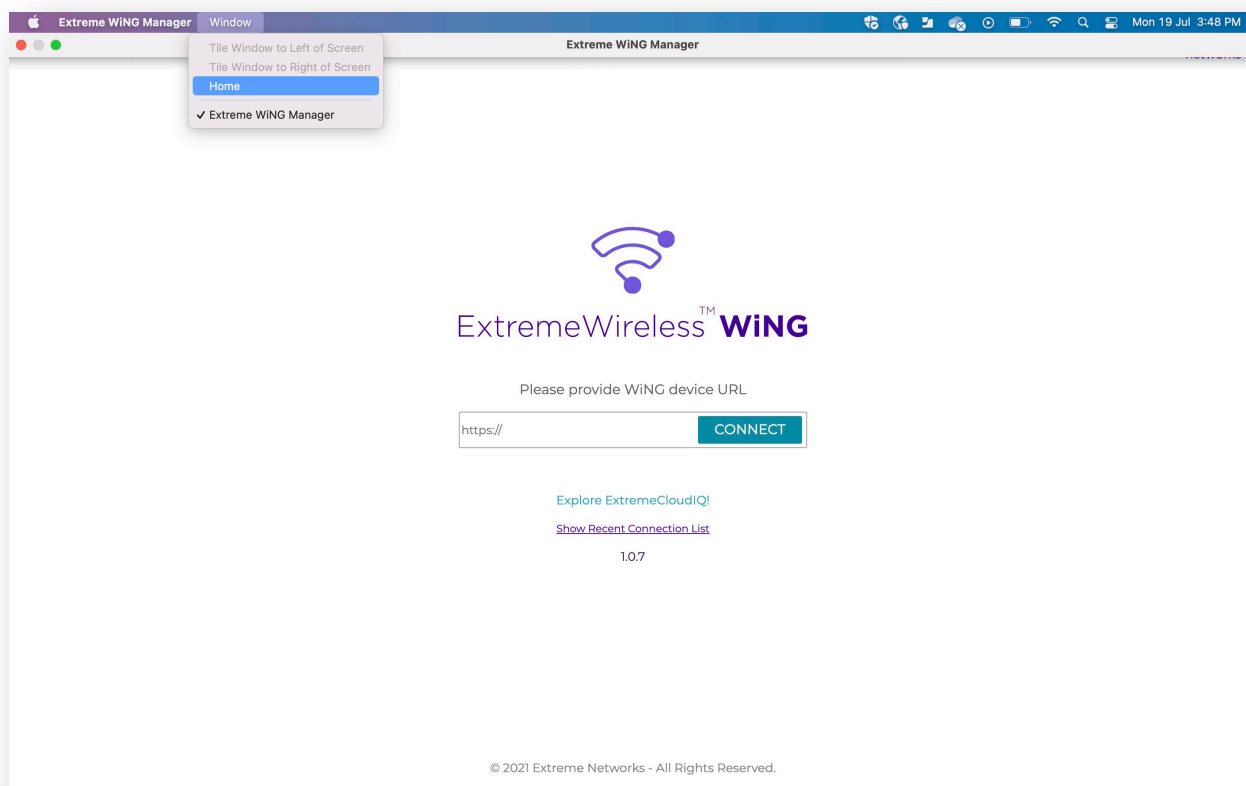


Figure 2 Window->Home can be used to go back to login screen

WiNG Manager v1.0.6

This release of WiNG Manager fixes a long outstanding issue which prevented printing from the app. The issue is caused by the framework used to build app. This release incorporates a workaround to address same and printing is now functional.

IMPORTANT – Uninstall all existing Windows versions before installing v1.0.6.

Issues Fixed

ESR	Description
WOSMGR-10	WiNGMan utility does not allow printing of username and password for captive portal
WOSMGR-8	Support for MacOS
WING-43712	WiNGMan utility does not allow printing of username and password for captive portal

Known Issues

ESR	Description
WING-43796	WiNG Manager unable to use in China
WOSMGR-5	Hitting Enter in Connect textbox should initiate connection

System Requirements

- Microsoft® Windows™ 10 (local or hosted)
 - Windows 10 64bit
 - HDD 100 MB
 - RAM 4 GB

WiNG Manager v1.0.5

This release of WiNG Manager changes install architecture to 32bit from 64bit on Windows platforms. Also, the installer is now digitally signed to avoid Windows Defender issues. There is a known issue in Electron.js community preventing printing from Flash application.

IMPORTANT – Uninstall v1.0.4 and any beta version(s) of v1.0.5 before installing v1.0.5.

Issues Fixed

ESR	Description
WING-43826	Wing Manager v1.0.4 White Screen when Installed on Windows Server 2012, 2016, and 2019
CFD-5924	Windows 10 MS Defender Error When Trying to Install Wing Manager v1.0.4.
CFD-5947	WiNGMan 1.04 - "Couldn't load plugin" error when program starts on Windows 10 Pro 64 bit
WOSMGR-3	Unable to install WiNG Manager for multiple users
WOSMGR-2	White Screen Observed when Installed on VM
WOSMGR-4	WiNGMan installer can't be installed for a machine
WiNG-43907	WINGMan installation fail

Known Issues

ESR	Description
WING-43796	WiNG Manager unable to use in China
WING-43712	WiNGMan utility does not allow printing of username and password for captive portal
WOSMGR-5	Hitting Enter in Connect textbox should initiate connection

System Requirements

- Microsoft® Windows™ 10 (local or hosted)
 - Windows 10 64bit
 - HDD 100 MB
 - RAM 4 GB

WiNG Manager v1.0.4

This release of WiNG Manager packages a licensed version of flash plugin required for redistributing to customers. This release also removes the time limit of displaying flash content as per Adobe® Flash® EOL deadline of Jan 12, 2021.

Issues Fixed

ESR	Description
WING-43814	WiNG MAN unable to use after 12 Jan 2021

Known Issues

ESR	Description
WING-43796	WiNG Manager unable to use in China
WING-43712	WiNGMan utility does not allow printing of username and password for captive portal

System Requirements

- Microsoft® Windows™ 10
 - Windows 10 64bit
 - HDD 100 MB
 - RAM 4 GB

WiNG Manager v1.0.2

WiNG Manager (aka WiNGMan) is a desktop application designed to provide a stop-gap solution to WiNG customers affected by impending EOL of Flash support end of 2020. This application is targeted as a migratory tool between current UI and the new HTML5 UI which is under heavy development for WiNG5 and WiNG7.

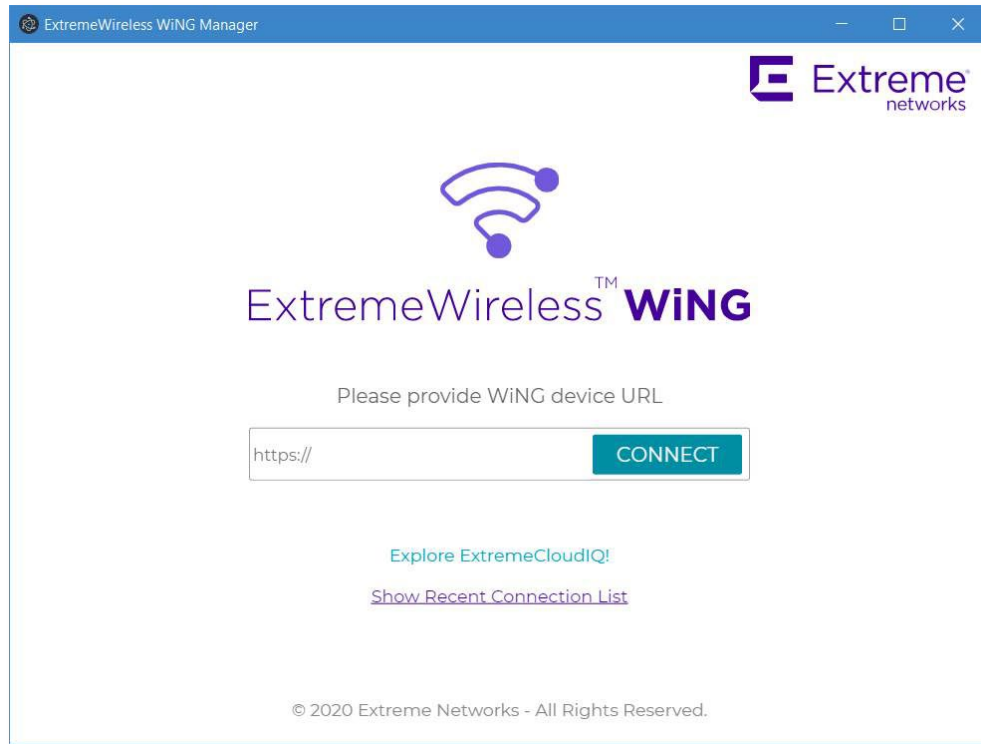
WiNGMan is built using ElectronJS and packages Google® Chrome supplied Flash plugin for accessing Flash content.

Highlights

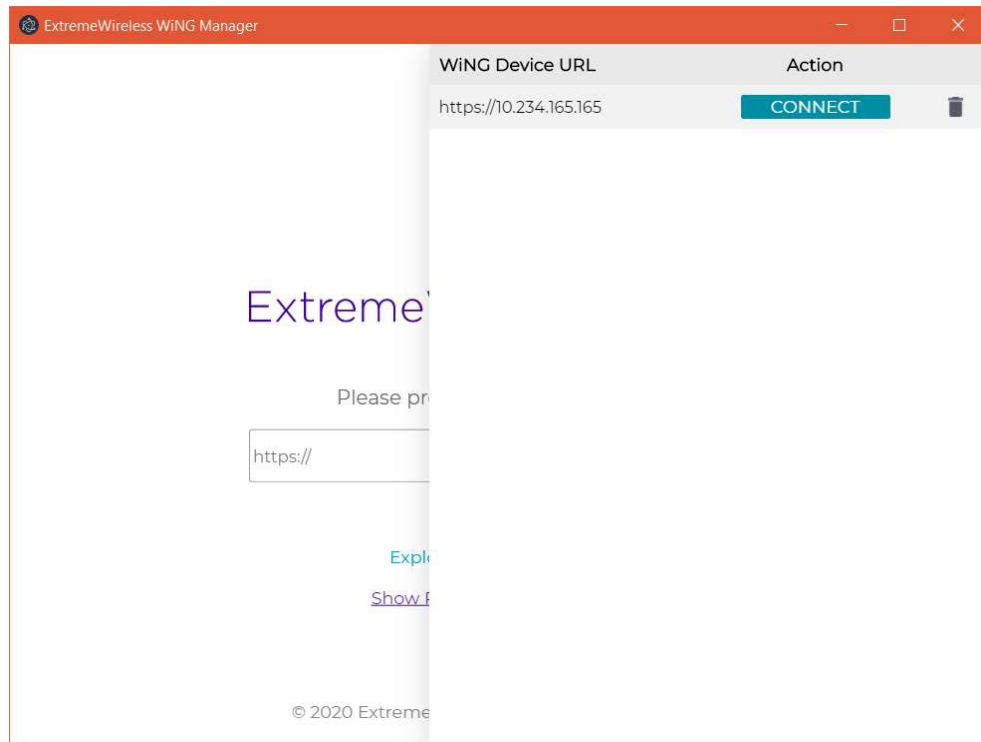
- Access to WiNG UI beyond 2020.
- Zero config change on WiNG device for WiNGMan.
- Ability to bookmark device URLs in WiNGMan for quick access.
- Installable application.

Screenshots

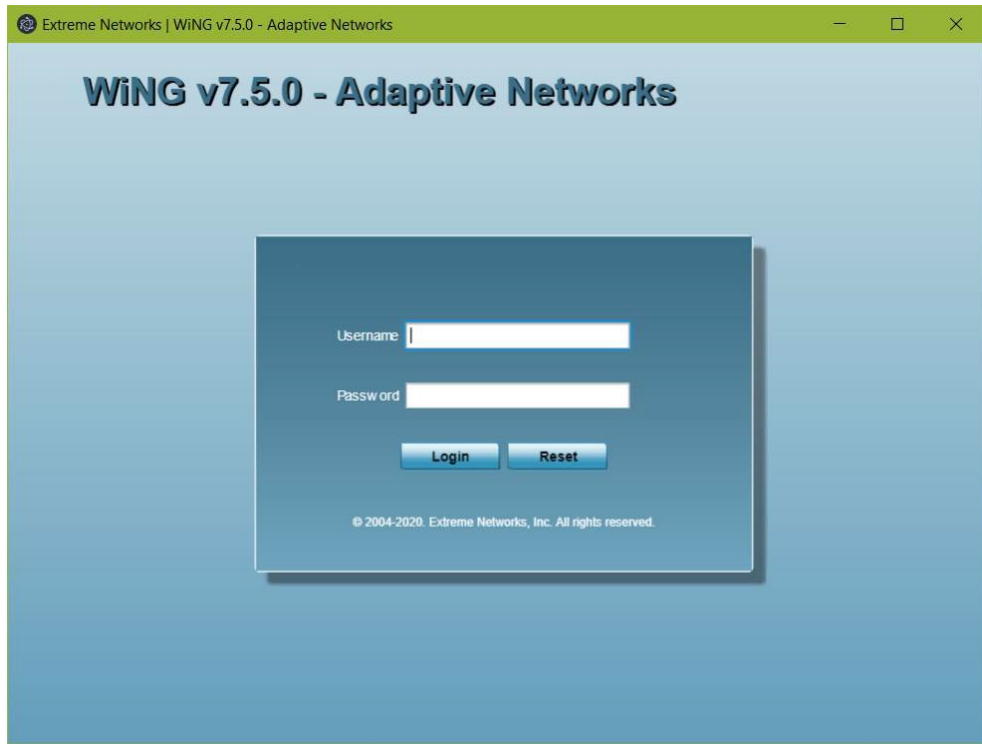
- Landing page



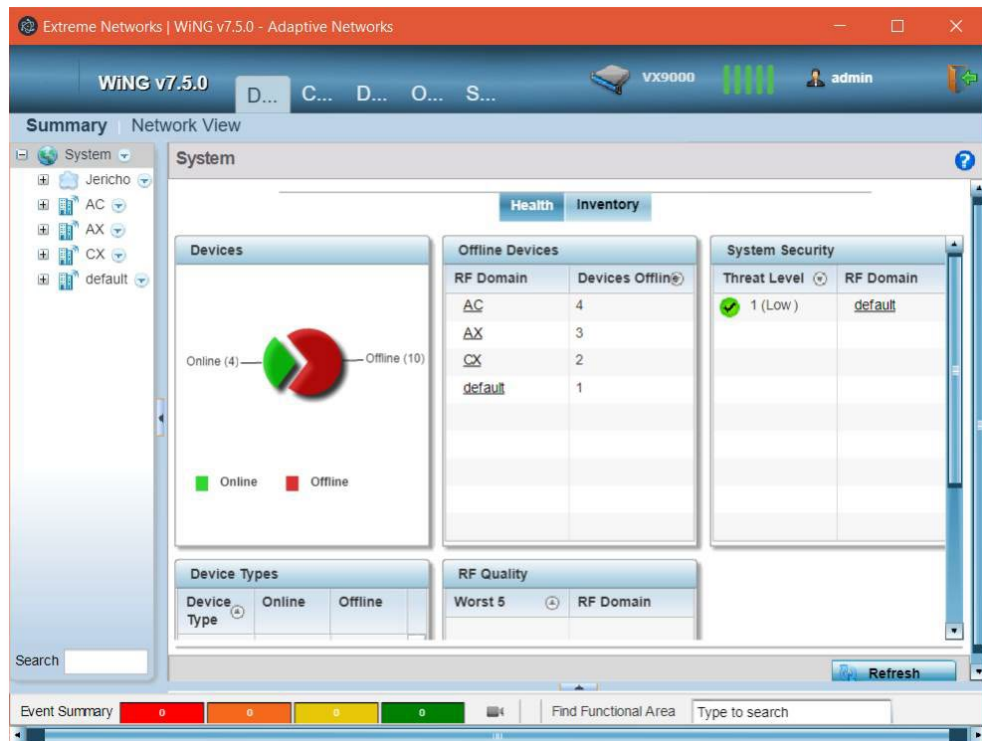
- Bookmarks



- WiNG UI login



- WiNG UI



System Requirements

- Microsoft® Windows™ 10
 - Windows 10
 - HDD 100 MB
 - RAM 4 GB

Platforms Support

Supports all WiNG controllers and APs on WiNG7 releases.

Notes

1. For using the remote GUI feature in XIQ to connect to WiNG devices, XIQ MUST be opened in WiNG Manager as well.
2. Licensed version of Flash® plugin is supported by Adobe®/Harman® everywhere except China. Please see <https://www.adobe.com/in/products/flashplayer/enterprise-end-of-life.html>.
3. Supports AirDefence patch 10.4.1-06b2.

© Extreme Networks. 2025. All rights reserved.