



Release Notes for ExtremeCloud Business Insights for Venues

Version 24.05

9038921-00 Rev. AA
May 2024



Copyright © 2024 Extreme Networks, Inc. All rights reserved.

Legal Notice

Extreme Networks, Inc. reserves the right to make changes in specifications and other information contained in this document and its website without prior notice. The reader should in all cases consult representatives of Extreme Networks to determine whether any such changes have been made.

The hardware, firmware, software or any specifications described or referred to in this document are subject to change without notice.

Trademarks

Extreme Networks and the Extreme Networks logo are trademarks or registered trademarks of Extreme Networks, Inc. in the United States and/or other countries.

All other names (including any product names) mentioned in this document are the property of their respective owners and may be trademarks or registered trademarks of their respective companies/owners.

For additional information on Extreme Networks trademarks, see: www.extremenetworks.com/about-extreme-networks/company/legal/trademarks

Open Source Declarations

Some software files have been licensed under certain open source or third-party licenses.

End-user license agreements and open source declarations can be found at: <https://www.extremenetworks.com/support/policies/open-source-declaration/>

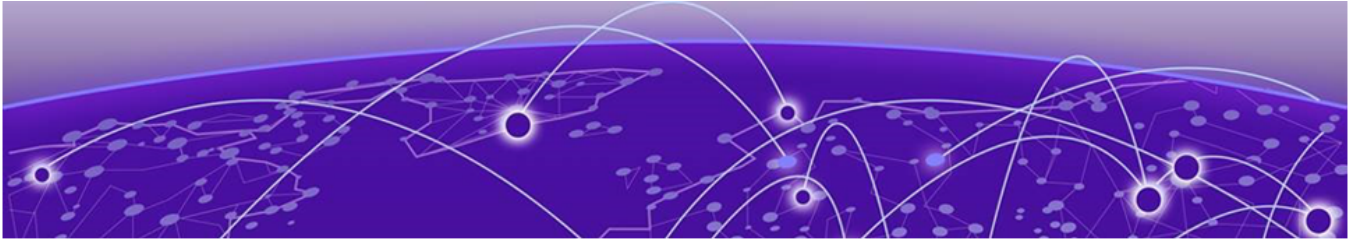


Table of Contents

About this Release.....	4
Product Integration Considerations.....	4
Installation Considerations.....	5
What's New in Release 24.05.....	5
New Features.....	5
Enhancements.....	5
Product Documentation.....	5



About this Release

[Product Integration Considerations](#) on page 4

[Installation Considerations](#) on page 5

[What's New in Release 24.05](#) on page 5

[Product Documentation](#) on page 5

These Release Notes cover the latest releases of ExtremeCloud Business Insights for Venues.

Product Integration Considerations

Consider the following when integrating with other Extreme Networks products:

ExtremeCloud IQ Controller

ExtremeCloud IQ Controller includes the following virtual appliances:

- **VMware**
 - VE6120
 - VE6125
- **KVM**
 - VE6120K
 - VE6125K
- **Microsoft Hyper-V**
 - VE6120H

And the following Hardware appliances:

- E2120
- E2122
- E3120
- E3125

The VA2_Inlets docker application is a mandatory installation. Please contact your Extreme Networks representative to arrange a professional installation.

Analytics managed by ExtremeCloud IQ Site Engine

ExtremeCloud IQ Site Engine includes the following deployment options when deployed with Business Insights:

- Analytics Traffic Sensor
- Analytics Purview Sensor (The application data can be sourced from the Application Telemetry feature on the switch).

With either sensor option, the sensors must run the same version that ExtremeCloud IQ Site Engine is running.

Installation Considerations

Contact your Extreme Networks representative to arrange to have a technical expert complete the installation for your venue.

What's New in Release 24.05

New Features

Licensing Phase II

The **License** page of Business Insights for Venues is updated with new controls that make it easy to apply, monitor, and enforce license subscriptions across your venues.

General Data Protection Regulations (GDPR) Compliance

ExtremeCloud Business Insights for Venues has been designed with privacy in mind for customers subject to the EU General Data Protection Regulations (GDPR) and incorporates safeguards supporting GDPR compliance. For more information, see:

Data Privacy and Protection at www.extremenetworks.com/about-extreme-networks/company/legal/data-privacy-and-protection.

Privacy and Cookies Policy at www.extremenetworks.com/about-extreme-networks/company/legal/privacy-and-cookies-policy.

Enhancements

Stability

Improved stability of the live events service and improved product availability and responsiveness. This enhancement addresses an issue where live events were sometimes kickstarting within the application.

Decreased Loading Times

Decreased loading times for charts, schedules, and live event selectors.

Product Documentation

For more information, refer to the *ExtremeCloud Business Insights for Venues User Guide* and in-product, context-sensitive online help.