



ExtremeCloud Business Insights for Venues Version 24.06 Release Notes

9038940-00 Rev. AB
July 2024



Copyright © 2024 Extreme Networks, Inc. All rights reserved.

Legal Notice

Extreme Networks, Inc. reserves the right to make changes in specifications and other information contained in this document and its website without prior notice. The reader should in all cases consult representatives of Extreme Networks to determine whether any such changes have been made.

The hardware, firmware, software or any specifications described or referred to in this document are subject to change without notice.

Trademarks

Extreme Networks and the Extreme Networks logo are trademarks or registered trademarks of Extreme Networks, Inc. in the United States and/or other countries.

All other names (including any product names) mentioned in this document are the property of their respective owners and may be trademarks or registered trademarks of their respective companies/owners.

For additional information on Extreme Networks trademarks, see: <https://www.extremenetworks.com/about-extreme-networks/company/legal/trademarks>

Open Source Declarations

Some software files have been licensed under certain open source or third-party licenses.

End-user license agreements and open source declarations can be found at: <https://www.extremenetworks.com/support/policies/open-source-declaration/>

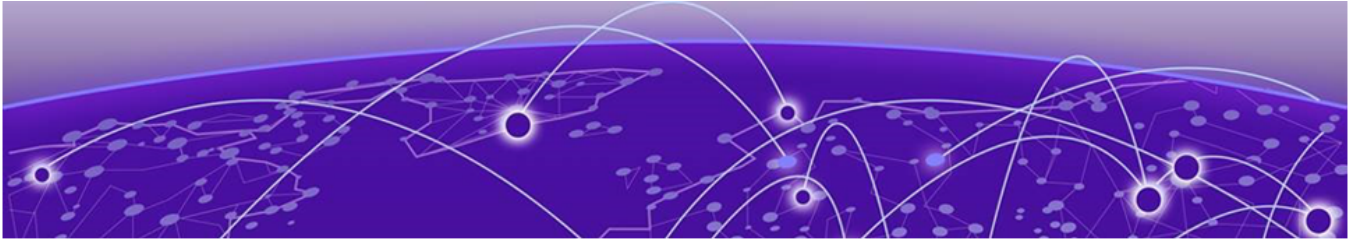


Table of Contents

About this Release.....	4
Product Integration Considerations.....	4
Installation Considerations.....	5
What's New in Release 24.06.....	5
Product Documentation.....	6



About this Release

[Product Integration Considerations](#) on page 4

[Installation Considerations](#) on page 5

[What's New in Release 24.06](#) on page 5

[Product Documentation](#) on page 6

These Release Notes cover the latest releases of ExtremeCloud Business Insights for Venues.

Product Integration Considerations

Consider the following when integrating with other Extreme Networks products:

ExtremeCloud IQ Controller

ExtremeCloud IQ Controller includes the following virtual appliances:

- **VMware**
 - VE6120
 - VE6125
- **KVM**
 - VE6120K
 - VE6125K
- **Microsoft Hyper-V**
 - VE6120H

And the following Hardware appliances:

- E2120
- E2122
- E3120
- E3125

The VA2_Inlets docker application is a mandatory installation. Please contact your Extreme Networks representative to arrange a professional installation.

Analytics managed by ExtremeCloud IQ Site Engine

ExtremeCloud IQ Site Engine includes the following deployment options when deployed with Business Insights:

- Analytics Traffic Sensor
- Analytics Purview Sensor (The application data can be sourced from the Application Telemetry feature on the switch).

With either sensor option, the sensors must run the same version that ExtremeCloud IQ Site Engine is running.

Installation Considerations

Contact your Extreme Networks representative to arrange to have a technical expert complete the installation for your venue.

What's New in Release 24.06

Location - Triangulation Dashboard

The new **Location - Triangulation** dashboard tracks client location using the Triangulation method of determining client location, which provides a more precise method of determining client location than the existing AP association method. Triangulation takes Received Signal Strength (RSS) readings from multiple APs into account to calculate a specific client location on the venue floor plan.

The new dashboard provides greater accuracy to location analytics data and includes location-based charts that report information such as client counts per venue area, dwell times in specific areas, and client movement throughout the venue, all using triangulation data.

Triangulation leverages the location tracking features of ExtremeCloud IQ Controller. To deploy this feature, you must configure Location Tracking on the controller, including importing the floor plan map, configuring the areas that you will use to track locations, and provisioning access points. Business Insights ingests the location information from the controller automatically.



Note

Existing dashboards, such as the **Location Dashboard**, still use the existing location by AP association method (where client location is assumed to be the same as the location of the AP to which the client associates).

Secondary Filters for Additional Granularity

Selected Historical and Live dashboards now include secondary filters that provide additional data granularity to dashboard reports. For example, you can use filter options on the **Summary** dashboard to output a dashboard report for a specific event that returns all clients that connected to applications such as Google or Facebook..

Tracked Applications per User

The **Tracked Applications** page now lets you select different applications to track per user. A user can now select their own applications to track without impacting the tracked applications of other users under that customer.

Product Documentation

For more information, refer to the [ExtremeCloud Business Insights for Venues User Guide](#) and in-product, context-sensitive online help.