

Extreme Fabric Automation Release Notes

2.5.3

9037132-03 Rev AA
October 2021



Copyright © 2021 Extreme Networks, Inc. All rights reserved.

Legal Notice

Extreme Networks, Inc. reserves the right to make changes in specifications and other information contained in this document and its website without prior notice. The reader should in all cases consult representatives of Extreme Networks to determine whether any such changes have been made.

The hardware, firmware, software or any specifications described or referred to in this document are subject to change without notice.

Trademarks

Extreme Networks and the Extreme Networks logo are trademarks or registered trademarks of Extreme Networks, Inc. in the United States and/or other countries.

All other names (including any product names) mentioned in this document are the property of their respective owners and may be trademarks or registered trademarks of their respective companies/owners.

For additional information on Extreme Networks trademarks, see: www.extremenetworks.com/company/legal/trademarks

Open Source Declarations

Some software files have been licensed under certain open source or third-party licenses. End-user license agreements and open source declarations can be found at: <https://www.extremenetworks.com/support/policies/open-source-declaration/>

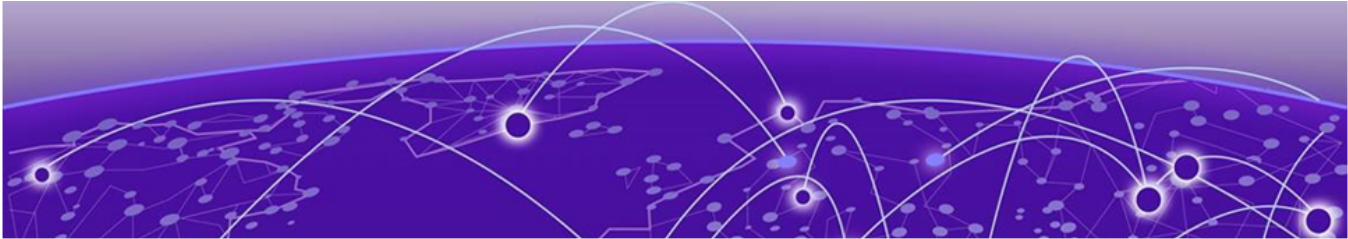
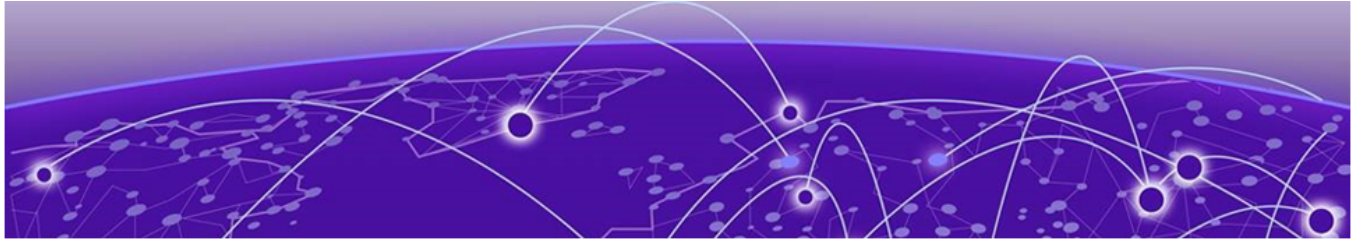


Table of Contents

Release Notes.....	4
New In This Release.....	4
CLI Commands.....	4
New commands.....	4
Modified commands.....	5
Supported Platforms and Deployment Models.....	5
Known Limitations.....	6
Defects Closed with Code Changes	7
Defects Closed without Code Changes.....	39
Open Defects.....	47



Release Notes

[New In This Release](#) on page 4

[CLI Commands](#) on page 4

[Supported Platforms and Deployment Models](#) on page 5

[Known Limitations](#) on page 6

[Defects Closed with Code Changes](#) on page 7

[Defects Closed without Code Changes](#) on page 39

[Open Defects](#) on page 47

New In This Release

Extreme Fabric Automation 2.5.3 provides the following enhancements.

Table 1: Features and improvements

Feature	Description
Default gateways for TPVMs	Support for configuring the default gateway of a TPVM. For more information, see the Extreme Fabric Automation Administration Guide and the Extreme Fabric Automation Command Reference .
Static IP addresses for subinterfaces	Support for configuring static IP addresses for management sub-interfaces. For more information, see the Extreme Fabric Automation Administration Guide and the Extreme Fabric Automation Command Reference .
Resolved defects	Defects Closed with Code Changes on page 7

CLI Commands

There are new and modified commands in this release.

New commands

- efa mgmt subinterface staticip add
- efa mgmt subinterface staticip remove
- efa mgmt subinterface staticip show

Modified commands

- efa inventory device register

Supported Platforms and Deployment Models

Support includes bare metal, OVA, and TPVM deployment models, supported TPVM versions, supported SLX-OS software versions, and supported SLX devices.

Table 2: Bare Metal Deployment Models

Version	Deployment	Managed SLX Devices	Multi-Fabric Support	Ubuntu Version	Server Requirements
EFA 2.3.x, 2.4.x, and 2.5.x	External server (bare metal)	More than 24	Yes	16.04 and 18.04	<ul style="list-style-type: none"> • CPU: 4 cores • Storage: 50 GB • RAM: 8 GB

Table 3: OVA Deployment Models

EFA Version	Deployment	Managed SLX Devices	Multi-Fabric Support	Ubuntu Version	Server Requirements
2.3.x, 2.4.x, 2.5.x (Secure mode)	External server (OVA)	More than 24	Yes	18.04	<ul style="list-style-type: none"> • CPU: 4 cores • Storage: 50 GB • RAM: 8 GB

Table 4: TPVM Deployment Models

EFA Version	TPVM Deployment	Managed SLX Devices	Multi-Fabric Support	Ubuntu Version	Minimum SLX-OS Version
2.3.x	<ul style="list-style-type: none"> • SLX 9150 • SLX 9250 • SLX 9740 	Up to 24	Yes	18.04	20.2.2a
2.4.x	<ul style="list-style-type: none"> • SLX 9150 • SLX 9250 • SLX 9740 	Up to 24	Yes	18.04	20.2.2b
2.5.x	<ul style="list-style-type: none"> • SLX 9150 • SLX 9250 • SLX 9740 	Up to 24	Yes	18.04	20.2.3.f

Table 5: TPVM Software Support

TPVM Version	SLX-OS 20.2.3d/e/f	SLX-OS 20.3.2	SLX-OS 20.3.2a	SLX-OS 20.3.2b	SLX-OS 20.3.2c	Ubuntu Version	EFA Version
4.2.2	Yes	No	No	No	No	18.04	2.3.x
4.2.4	Yes	No	No	No	No	18.04	2.4.x
4.2.5	No	Yes	Yes	No	No	18.04	2.4.x, 2.5.0
4.2.5	No	No	No	Yes	No	18.04	2.5.1, 2.5.2
4.2.5	No	No	No	No	Yes	18.04	2.5.3

**Note**

The seamless TPVM upgrade feature is not available in SLX 20.2.3f.

Table 6: IP Fabric Topology Matrix

Device	SLX-OS Release	Leaf	Spine	Super Spine	Border Leaf	Small DC Fabric
SLX 9150	20.1.x, 20.2.x, 20.3.x	✓				✓
SLX 9250	20.1.x, 20.2.x, 20.3.x	✓	✓	✓		✓
SLX 9540	20.1.x, 20.2.x, 20.3.x	✓			✓	
SLX 9640	20.1.x, 20.2.x, 20.3.x				✓	
SLX 9740	20.2.x, 20.3.x		✓	✓	✓	✓

Table 7: EFA, Neutron, and SLX-OS Compatibility

EFA Version	Neutron Version	SLX-OS Version
2.3.0	2.3.0_19	20.1.2d
2.3.1, 2.3.2	2.3.1_02	20.1.2e, 20.2.2a
2.4.0, 2.4.1	3.0.0-23	20.2.3, 20.2.3a/b/c
2.4.2, 2.4.3, 2.4.4, 2.4.6	3.0.1-07	20.2.3d/e/f
2.5.0	3.1.0-15	20.3.2a
2.5.1, 2.5.2	3.1.1-04	20.3.2b
2.5.3	3.1.1-04	20.3.2c

Known Limitations

Note the following caveat for this release of Extreme Fabric Automation.

Insight port is not supported for this release of Extreme Fabric Automation

For this release, do not enable the Insight port on a port channel. Doing so can cause traffic loss. Support will be provided in a future release of Extreme Fabric Automation.

Defects Closed with Code Changes

The following defects, which were previously disclosed as open, were resolved in Extreme Fabric Automation 2.5.0, 2.5.1, 2.5.2, and 2.5.3.

Parent Defect ID:	EFA-5732	Issue ID:	EFA-5732
Severity:	S2 - High		
Product:	Extreme Fabric Automation	Reported in Release:	EFA 2.2.0
Symptom:	When firmware download is in progress, fabric delete command is accepted without an error.		
Condition:	If fabric delete command is submitted when firmware download is in progress, it fails.		
Workaround:	Allow firmware download process to complete. Status of the same can be checked using command efa inventory device firmware-download show --fabric {fabric name}		
Recovery:	Fabric can be deleted once the firmware download is completed		

Parent Defect ID:	EFA-6501	Issue ID:	EFA-6501
Severity:	S3 - Medium		
Product:	Extreme Fabric Automation	Reported in Release:	EFA 2.3.0
Symptom:	Configuration Drift for VRF still shown in "cfg-in-sync" though its child configuration are drifted on SLX switch.		
Condition:	With below steps issue can be observed. 1) Create VRF/EPG having route target, static route and bgp configuration. 2) Introduce drift in VRF route target or static route or bgp configuration on SLX switch. 3) Update device from efa command "efa inventory device update --ip <device ip>" 4) Check device drift using efa command as "efa inventory drift-reconcile execute --ip <device ip>" 5) VRF shows as "cfg-in-sync" though its child configuration was drifted.		
Workaround:	None		
Recovery:	After drift and reconcile all EFA and device configuration will be in sync.		

Parent Defect ID:	EFA-7324	Issue ID:	EFA-7324
Severity:	S3 - Medium		
Product:	Extreme Fabric Automation	Reported in Release:	EFA 2.3.0
Symptom:	Continuous create/delete of BGP peer-group and peer can finally cause CLI errors		

Parent Defect ID:	EFA-7324	Issue ID:	EFA-7324
Condition:	When create and delete BGP peer/peer-group is repeatedly done in a loop. This will cause inventory does not have chance to update its DB with the current design so DB can be out of sync between inventory and tenant. When other events happen such as timer collection from inventory to sweep config to tenant, it can cause issues on tenant DB where CLI can fail.		
Workaround:	Avoid such cycles of operations		
Recovery:	Delete the BGP peer/peer-group in problem and recreate them again.		

Parent Defect ID:	EFA-8090	Issue ID:	EFA-8090
Severity:	S2 - High		
Product:	Extreme Fabric Automation	Reported in Release:	EFA 2.4.0
Symptom:	When a fabric containing more than 15 newly registered devices is deployed using the CLI 'efa fabric configure', an attempt to add ports of any of these devices to a tenant within 5 minutes may fail. The error will indicate that the ports have not yet been registered in the fabric		
Condition:	Attempt to add device ports of a recently configured fabric to a tenant may fail with an error indication that the ports have not yet been registered in the fabric		
Workaround:	Wait for up to 5 minutes after deploying the fabric before adding ports to a tenant		
Recovery:	This is a transient error. Rerunning the port-add operation after a maximum wait time of 5 minutes will succeed		

Parent Defect ID:	EFA-8152	Issue ID:	EFA-8152
Severity:	S2 - High		
Product:	Extreme Fabric Automation	Reported in Release:	EFA 2.4.0
Symptom:	While graceful-restart(GR) updating with value TRUE and inflight transition triggered as a part of EFA rollover then update will continue as a part of inflight transition.		
Condition:	Update GR with value TRUE and perform EFA rollover on HA setup.		

Parent Defect ID:	EFA-8155	Issue ID:	EFA-8155
Severity:	S2 - High		
Product:	Extreme Fabric Automation	Reported in Release:	EFA 2.4.0
Symptom:	"cluster-client auto" is not configured under port channel for first reloaded device.		

Parent Defect ID:	EFA-8155	Issue ID:	EFA-8155
Condition:	Execute below steps to hit this condition 1) Create fabric on MCT paired device 2) Create Tenant/PO/VRF/EPG 3) Enable MM mode on both device 4) Perform EFA backup 5) Delete EPG/VRF/PO/Tenant 6) Delete fabric 7) Restore EFA backup 8) Reload device one by one After these steps check PO on both device, "cluster-client auto" will not configured on first reloaded device.		
Workaround:	Instead of reload device in Step (8), perform manual DRC using inventory CLI as "efa inventory drift-reconcile execute --ip <device ip> --reconcile" for each device.		

Parent Defect ID:	EFA-8257	Issue ID:	EFA-8257
Severity:	S2 - High		
Product:	Extreme Fabric Automation	Reported in Release:	EFA 2.4.0
Symptom:	EFA is not able to detect drift for configuration like VRF/VE/VLAN/EVPN		
Condition:	Please follow below steps, 1) Create tenant/VRF/PO/EPG 2) As soon as EPG creation pushed configuration on device, remove them from device. 3) Check drift using inventory CLI as "efa inventory drift-reconcile execute --ip --device-ip <device ip>"		
Workaround:	As this is timing issue so we need to wait for 1 min before remove configurations from device.		
Recovery:	We need to delete EPG and recreate it again.		

Parent Defect ID:	EFA-8269	Issue ID:	EFA-8269
Severity:	S3 - Medium		
Product:	Extreme Fabric Automation	Reported in Release:	EFA 2.4.0
Symptom:	EPG app-state moved to cfg-refresh-err after epg delete and admin up		

Parent Defect ID:	EFA-8269	Issue ID:	EFA-8269
Condition:	1) Configure clos fabric (Medium scale fabric) 2) Create tenant 3) Admin down the devices 4) Create port-channels, vrfs and epgs 5) Admin up the following devices Wait for the DRC to be success 6) Repeat step 3 Wait for the devices to put into maintenance mode 7) Create bgp peer-group and dynamic peers 8) Delete all epg's 9) Repeat step 5 10) Vrfs are getting deleted from admin up devices 11) EPG app-state move to cfg-refresh-err		
Recovery:	Delete the EPGs in cfg-refresh-err state and recreate them.		

Parent Defect ID:	EFA-8273	Issue ID:	EFA-8273
Severity:	S3 - Medium		
Product:	Extreme Fabric Automation	Reported in Release:	EFA 2.4.0
Symptom:	EPG Update "vrf-add" operation gives success when EPG is in "vrf-delete-pending" state		
Condition:	Perform EPG Update "vrf-add" operation on an EPG in "vrf-delete-pending" state		
Workaround:	No workaround		
Recovery:	User needs to remove the VRF from EPG using EPG update "vrf-delete" operation before attempting the "vrf-add" operation.		

Parent Defect ID:	EFA-8315	Issue ID:	EFA-8315
Severity:	S2 - High		
Product:	Extreme Fabric Automation	Reported in Release:	EFA 2.4.0
Symptom:	User adds ports in empty EPG and immediately deletes them. The following adding ports into EPG can have error as duplicate entry		
Condition:	1) Add ports in empty EPG 2) Delete ports from epg right away 3) Add ports into EPG. Which can have error.		
Workaround:	After adding ports into EPG, wait certain time before trying to delete ports from EPG.		
Recovery:	Delete the EPG and recreate again.		

Parent Defect ID:	EFA-8322	Issue ID:	EFA-8322
Severity:	S3 - Medium		
Product:	Extreme Fabric Automation	Reported in Release:	EFA 2.4.0

Parent Defect ID:	EFA-8322	Issue ID:	EFA-8322
Symptom:	EPG Update "anycast-ip-delete" operation gives different output/result when one of the EPG device is admin down		
Condition:	1) Create L3 EPG with anycast-ip/anycast-ipv6 2) Take one of EPG device administratively down 3) Bring device admin up which was taken down in previous step 4) While device is coming up administratively, try EPG Update "anycast-ip-delete" operation		
Workaround:	No workaround		
Recovery:	No recovery as such. Wait for device to be completely up before trying EPG Update "anycast-ip-delete" operation		

Parent Defect ID:	EFA-8334	Issue ID:	EFA-8334
Severity:	S3 - Medium		
Product:	Extreme Fabric Automation	Reported in Release:	EFA 2.5.0
Symptom:	system backup and restore causes epg state to be in cfg-refresh-err		
Condition:	Tenant DB and inventory DB needs time to be in sync. In a busy and scaled system this in sync can take much longer time to finish. Backup DB during DB un-sync window can cause system saves the DBs for tenant and inventory which are not synced yet and following restore will have issues.		
Workaround:	If there's a need to make system backup, please execute the backup after system have not made any new config for few minutes. It's needed for the inventory and tenant databases to be in sync before executing system backup. In a busy system the DB sync can take longer to finish.		
Recovery:	Delete the EPGs which report errors and recreate them.		

Parent Defect ID:	EFA-8335	Issue ID:	EFA-8335
Severity:	S2 - High		
Product:	Extreme Fabric Automation	Reported in Release:	EFA 2.4.0
Symptom:	system backup and restore causes following manual DRC has errors		
Condition:	Tenant DB and inventory DB needs time to be in sync. In a busy and scaled system this in sync can take much longer time to finish. Backup DB during this window will cause system saves the DB for tenant and inventory which is not synced yet and following restore will have issues.		

Parent Defect ID:	EFA-8335	Issue ID:	EFA-8335
Workaround:	If there's a need to make system backup, please execute the backup after system have not made any new config for few minutes. It's needed for the inventory and tenant databases to be in sync before executing system backup. In a busy system the DB sync can take longer to finish.		
Recovery:	Delete the epg or tenant with problem and recreate them.		

Parent Defect ID:	EFA-8443	Issue ID:	EFA-8443
Severity:	S3 - Medium		
Product:	Extreme Fabric Automation	Reported in Release:	EFA 2.4.0
Symptom:	For Tenant created with L3 port having multiple ip-address associated with it, "efa tenant show" will have repeated entries of that L3 port.		
Condition:	Steps to reproduce issue: 1) Assign multiple IPs to the physical port on SLX. 2) Create Tenant using same L3 port. 3) Check Tenant show output. L3 ports having multiple IPs will have repeated entry in the "efa tenant show" output.		
Workaround:	No workaround.		
Recovery:	Recovery can be done by removing all but one IP from the L3 port on SLX followed by an inventory device update.		

Parent Defect ID:	EFA-8465	Issue ID:	EFA-8465
Severity:	S2 - High		
Product:	Extreme Fabric Automation	Reported in Release:	EFA 2.4.0
Symptom:	The "efa inventory device firmware-download prepare add" command fails with "Please specify 'fullinstall' option in firmware download cmdline as GLIBC versions change".		
Condition:	Upgrading the SLX firmware from 20.1.2x to 20.2.x requires a 'fullinstall' firmware download in order to proceed.		
Workaround:	There is no workaround from EFA. The firmware download fullinstall must be carried out individually on each SLX device.		

Parent Defect ID:	EFA-8507	Issue ID:	EFA-8507
Severity:	S2 - High		
Product:	Extreme Fabric Automation	Reported in Release:	EFA 2.4.0
Symptom:	Certain vlans are missed in configuration when stacks are created in quick succession within a script with no delay.		

Parent Defect ID:	EFA-8507	Issue ID:	EFA-8507
Condition:	10 stack creations without much delay leads to missing configuration. Trunk Subport update is not generated from neutron. Issue is seen with only one controller and not seen when more delay is introduced between stack creations. Trunk also remains in DOWN state.		
Workaround:	Workaround is to have delay between stack creation.		
Recovery:	Remove the Trunk Parent port added to the VM and add it back again. e.g. Max-L2-ss3VirtloVM2_Test1==> VM Name Max-L2-ss3VirtloTrunkPort2_Test1 ==> Parent Port of the Sub Port that is down openstack server remove port Max-L2-ss3VirtloVM2_Test1 Max-L2-ss3VirtloTrunkPort2_Test1 openstack server add port Max-L2-ss3VirtloVM2_Test1 Max-L2-ss3VirtloTrunkPort2_Test1		

Parent Defect ID:	EFA-8512	Issue ID:	EFA-8512
Severity:	S3 - Medium		
Product:	Extreme Fabric Automation	Reported in Release:	EFA 2.4.0
Symptom:	On SLX there can have partial config of neighbor under router bgp. The "show running command router bgp" from SLX shows invalid command "neighbor pg1" (Assume the bgp-group name is pg1). There's no corresponding command to delete this.		
Condition:	It's found if issue netconf RPC to SLX device with BGP peer group delete operation which the peer-group does not exist, SLX will create the invalid "neighbor pg1".		
Workaround:	Under some admin-down device scenario, avoid delete the same bgp-peer more than once.		
Recovery:	On SLX use the following commands to get rid of the partial bgp-peer. SLX(config)# router bgp SLX(config-bgp-router)# neighbor pg1 peer-group SLX(config-bgp-router)# no neighbor pg1 peer-group		

Parent Defect ID:	EFA-8517	Issue ID:	EFA-8517
Severity:	S3 - Medium		
Product:	Extreme Fabric Automation	Reported in Release:	EFA 2.5.0
Symptom:	Config deployment on EFA takes longer time after stack create complete		
Condition:			

Parent Defect ID:	EFA-8526	Issue ID:	EFA-8526
Severity:	S3 - Medium		
Product:	Extreme Fabric Automation	Reported in Release:	EFA 2.4.0
Symptom:	VRF Update "centralized-router-add" fail with error "[x, y] are MCT pair. Update the VRF with both devices together as centralized routers"		

Parent Defect ID:	EFA-8526	Issue ID:	EFA-8526
Condition:	1) In a CLOS fabric setup with MCT pair of border-leafs, create VRF with routing-type as centralized and select MCT pair of border-leafs as centralized routers. 2) Remove one of the MCT pair border-leaf from the fabric 3) Add same/different border-leaf to the fabric and run fabric configure command 4) Wait for sometime and run VRF Update "centralized-router-add" operation to add newly added border-leaf as centralized router		
Workaround:	Run VRF Update "centralized-router-add" operation and specify both nodes of MCT pair border-leafs as centralized routers.		
Recovery:	No recovery is required.		

Parent Defect ID:	EFA-8573	Issue ID:	EFA-8573
Severity:	S3 - Medium		
Product:	Extreme Fabric Automation	Reported in Release:	EFA 2.4.0
Symptom:	In few cases, networks in EPG will remain in cfg-in-sync state even if they are created with partial success topology (MCT pair with one admin-up device and one admin-down device).		
Condition:	The issue is seen with the below steps 1) Configure a fabric 2) Create Tenant 3) Create multi-homed portchannel 4) Bring one of the devices of the MCT pair(having the PO created in step 3) admin-down to create a partial success topology 5) Create EPGs on the partial success topology		
Recovery:	Bring all the devices in admin-up state. It should push all the configs on devices and everything will be in cfg-in-sync.		

Parent Defect ID:	EFA-8628	Issue ID:	EFA-8628
Severity:	S3 - Medium		
Product:	Extreme Fabric Automation	Reported in Release:	EFA 2.4.0
Symptom:	Tenant does not contain any Ports, state of EPG is "vrf-delete-pending" and EPG Update "vrf-delete" fail with error- "EPG cannot be updated with tenant having no ports"		
Condition:	Step1) Create Fabric and Tenant Step2) Create VRF using Routing type as Centralized and Border-leaf devices as Centralized Routers Step3) Create EPG using VRF created in Step2 with Physical Ports/Portchannel from leaf devices Step4) Delete all the devices from Fabric and/or Inventory Step5) Perform EPG Update "vrf-delete" operation		

Parent Defect ID:	EFA-8628	Issue ID:	EFA-8628
Workaround:	No workaround is required.		
Recovery:	Delete and re-create EPG(s).		

Parent Defect ID:	EFA-8665	Issue ID:	EFA-8665
Severity:	S3 - Medium		
Product:	Extreme Fabric Automation	Reported in Release:	EFA 2.4.1
Symptom:	VRF configuration present on Border Leaf devices		
Condition:	1) Create Fabric and Tenant 2) Create VRF using Routing-type as "Centralized" and Border-leaf devices as Centralized-Routers 3) Create EPG(s) using VRF created in Step2 and Physical Ports/Portchannel from Leaf devices 4) Remove Leaf devices (having the Physical Ports/Portchannel used in the EPG) from Fabric/Inventory		
Workaround:	No workaround.		
Recovery:	Manually clean up VRF configuration from device		

Parent Defect ID:	EFA-8669	Issue ID:	EFA-8669
Severity:	S2 - High		
Product:	Extreme Fabric Automation	Reported in Release:	EFA 2.4.0
Symptom:	EFA is not reachable after secondary node down/up of 8720. (kube-system pods are not responding)		
Condition:	This issue occurs only when the management cables are unplugged for under 10 seconds and plugged back in. What happens is that the EFA failover keepalived scripts, which does labeling and then switches the pod over to the other node, doesn't finish to completion causing the node labeling to not reflect right status where the VIP is assigned.		
Workaround:	Either keep the management ports unplugged for more than 20 seconds or reboot the tpvm.		
Recovery:	Reboot the tpvm.		

Parent Defect ID:	EFA-8701	Issue ID:	EFA-8701
Severity:	S2 - High		
Product:	Extreme Fabric Automation	Reported in Release:	EFA 2.4.1
Symptom:	EFA becomes unresponsive and the OS reports that there is no disk space.		

Parent Defect ID:	EFA-8701	Issue ID:	EFA-8701
Condition:	Galera is technology used by mysql to keep data in sync between nodes. Occasionally, such a transfer between nodes can fail, resulting in a log file of the failed transaction, and some binary data. These accumulate in /apps/efadata/mysql. EFA will tar.gz these logs hourly and delete; but if there is a rapid accumulation, this process can be slow, and under extreme circumstances, not complete before the next hour starts. Eventually, the system is unable to proceed.		
Workaround:	Delete files matching GRA_*.log in /apps/efadata/mysql. These are not needed by EFA.		
Recovery:	Delete files matching GRA_*.log in /apps/efadata/mysql. These are not needed by EFA. Kill all tar czvf processes working on GRA*.log files.		

Parent Defect ID:	EFA-8773	Issue ID:	EFA-8773
Severity:	S2 - High		
Product:	Extreme Fabric Automation	Reported in Release:	EFA 2.4.1
Symptom:	When the address family config is manually removed from the SLX followed by DRC, the DRC fails with the error - "Error: VRF Address Family not configured".		
Condition:	Steps to reproduce: 1. Configure a L3 EPG via EFA which results in VRF configuration on the SLX. 2. Remove the address-family configuration from SLX (this would remove bgp address-family configuration also). 3. Initiate the DRC to push back the configuration from EFA. 4. DRC fails with error "Error: VRF Address Family not configured".		
Workaround:	No workaround.		
Recovery:	Configure the address family on the switch manually and then trigger DRC. The configuration will be reconciled.		

Parent Defect ID:	EFA-8802	Issue ID:	EFA-8802
Severity:	S3 - Medium		
Product:	Extreme Fabric Automation	Reported in Release:	EFA 2.4.1
Symptom:	Same epG will be allowed to update with different port properties value, however the first configured value will take effect		

Parent Defect ID:	EFA-8802	Issue ID:	EFA-8802
Condition:	1. Create L3 epg e1 with port-group P1 port-group property switch port mode trunk 2. Update epg e1 by port-group-add P2 and port-group property switch port mode as trunk 3. Update same epg e1 by port-group-add P2 and different port-group property switch port mode trunk-no-default-native Above steps are applicable for all port properties like switch port mode , switchport-native-vlan-tagging, switchport-native-vlan, single-homed-bfd-session-type. No error is seen while updating with different port property		
Workaround:	Updating the epg with similar port property values since idempotency doesn't work		

Parent Defect ID:	EFA-8827	Issue ID:	EFA-8827
Severity:	S3 - Medium		
Product:	Extreme Fabric Automation	Reported in Release:	EFA 2.4.1
Symptom:	CEP port will remain in "cfg-refreshed" state even after the DRC is successful.		
Condition:	1. Create EPG with CEP ports. 2. Configure "MM enable on reboot" on the SLX and modify any of the CEP port properties. 3. Reboot the SLX. 4. MM triggered DRC will reconcile all the port properties but the CEP will remain in cfg-refreshed state.		
Recovery:	CEP in cfg-refreshed state can be removed from the EPG and readded to the EPG.		

Parent Defect ID:	EFA-8848	Issue ID:	EFA-8848
Severity:	S3 - Medium		
Product:	Extreme Fabric Automation	Reported in Release:	EFA 2.4.1
Symptom:	When a configuration drift is introduced on a physical port on the SLX device, followed by a DRC on the device, the reconcile status displays "Portchannel" and "Vlan" reconciliation status as success even though the same were not drifted.		
Condition:	Below are the steps to reproduce the issue: 1) Create Fabric/Tenant using MCT paired SLX devices. 2) Create an EPG using the physical port (P1) from an MCT SLX device (D1). 3) Introduce drift on port (P1) on the SLX device(D1). 4) Perform DRC of the SLX device (D1). 5) DRC executed successfully and all configuration pushed on the SLX device. 6) DRC output displays "Portchannel" and "Vlan" reconciliation status as success even though the same were not drifted.		

Parent Defect ID:	EFA-8966	Issue ID:	EFA-8966
Severity:	S4 - Low		
Product:	Extreme Fabric Automation	Reported in Release:	EFA 2.4.0

Parent Defect ID:	EFA-8966	Issue ID:	EFA-8966
Symptom:	BGP peer group deletion fails when the deletion is attempted using a tenant not owning the BGP peer group.		
Condition:	Deletion of the BGP peer group which is not owned by an existing tenant.		
Workaround:	No workaround		

Parent Defect ID:	EFA-9009	Issue ID:	EFA-9009
Severity:	S2 - High		
Product:	Extreme Fabric Automation	Reported in Release:	EFA 2.5.0
Symptom:	Creation or update of an EPG involving a port group comprising more than 50 ports and 100 or more VLANs may take more than 6 minutes and may fail		
Condition:	When a user sends a Tenant EPG command to create or update an EPG involving a port group comprising more than 50 ports and 100 or more VLANs, the command may fail with the error "Error : EPG: <epg-name> Save for devices failed"		
Workaround:	Split such EPG create or update request to add not more than 50 VLANs at a time.		
Recovery:	None.		

Parent Defect ID:	EFA-9065	Issue ID:	EFA-9065
Severity:	S2 - High		
Product:	Extreme Fabric Automation	Reported in Release:	EFA 2.4.3
Symptom:	EFA Port Channel remains in cfg-refreshed state when the port-channel is created immediately followed by the EPG create using that port-channel		
Condition:	Below are the steps to reproduce the issue: 1. Create port-channel po1 under the ownership of tenant1 2. Create endpoint group with po1 under the ownership of tenant1 3. After step 2 begins and before step 2 completes, the raslog event w.r.t. step 1 i.e. port-channel creation is received. This Raslog event is processed after step 2 is completed		

Parent Defect ID:	EFA-9346	Issue ID:	EFA-9346
Severity:	S3 - Medium		
Product:	Extreme Fabric Automation	Reported in Release:	EFA 2.5.0
Symptom:	When the MCT Port channel membership is changed via config changes on SLX (out of band), Fabric service will not mark the device to be in cfg-refreshed state		
Condition:	This gives the user an incorrect impression that the status of the device is cfg-in-sync.		

Parent Defect ID:	EFA-9400	Issue ID:	EFA-9400
	S3 - Medium		

Parent Defect ID:	EFA-9400	Issue ID:	EFA-9400
Severity:			
Product:	Extreme Fabric Automation	Reported in Release:	EFA 2.4.4
Symptom:	When the EPG is in "port-group-delete-pending" state, the subsequent "port-group-delete" operations will not clean up any configurations from the admin up devices.		
Condition:	<p>The issue can be reproduced with the below steps:</p> <ol style="list-style-type: none"> 1. Create an EPG with CEEP port channels pg1, pg2. 2. Admin down one of the MCT nodes. 3. Deletion of pg1 from the EPG (created in step 1) will clean up all configs from the admin up device and the EPG moves to the "port-group-delete-pending" state. 4. Deletion of pg2 from the EPG will not clean any of the configurations from admin up device since the EPG is in the "port-group-delete-pending" state. 		
Workaround:	Perform a single port-group-delete operation with all the port-groups belonging to the EPG, instead of multiple port-group-delete operations with each iteration containing some of the port-groups belonging to the EPG		
Recovery:	Bring all the devices in admin-up state and then perform the port-group-delete operation on the EPG which will clean all configs on both the nodes		

Parent Defect ID:	EFA-9443	Issue ID:	EFA-9443
Severity:	S2 - High		
Product:	Extreme Fabric Automation	Reported in Release:	EFA 2.5.0
Symptom:	resilient-hash max-path is seen on the vrf even though it was deleted from the VRF (when the device was down) using VRF update rh-max-path-delete operation followed by the admin up of the device.		
Condition:	<p>Below are the steps to reproduce the issue:</p> <ol style="list-style-type: none"> 1. Configure Tenant and VRF with rh-max-path. 2. Create EPG using VRF created in step1. 3. Admin-down one of the MCT devices. 4. Execute VRF Update rh-max-path-delete operation. 5. Bring the admin down device administratively up. 		
Workaround:	<ol style="list-style-type: none"> 1. Execute VRF Update rh-max-path-add to add resilient-hash max-path again to the VRF. 2. Execute VRF Update rh-max-path-delete to remove resilient-hash max-path from the VRF. 		
Recovery:	No recovery is required		

Parent Defect ID:	EFA-9451	Issue ID:	EFA-9451
Severity:	S2 - High		
Product:	Extreme Fabric Automation	Reported in Release:	EFA 2.4.3

Parent Defect ID:	EFA-9451	Issue ID:	EFA-9451
Symptom:	In a brownfield deployment with the existing/stale MCT cluster-client configuration imported into EFA, the EPG creation fails when the MCT cluster-client ID conflicts with the MCT cluster-client ID already consumed by an out-of-band created MCT cluster-client.		
Condition:	Below are the probable steps to reproduce the issue: 1. Dual-homed (MCT) SLX has a brownfield MCT cluster-client configuration which is imported into EFA DB during "efa fabric configure" on the SLX. 2. Create tenant on the fabric configured in step1. 3. Create multi-homed port channels (which are already configured as MCT cluster-clients on the SLX) under the ownership of the tenant created in step 2. 4. Create EPG using the multi-homed port-channels and the same fails with the error "Port :<slx-mgmt-ip>;port-channel:<po-id> ClientID : <1000+po-id> already configured, conflicting with tenant-service generated ID <po-id>".		
Workaround:	No workaround		
Recovery:	Below are the recovery steps: 1. Delete the "cluster" configuration from one of the MCT SLX nodes and perform "inventory device update" for the SLX. 2. Delete the "cluster" configuration from the other MCT SLX node and perform "inventory device update" for the SLX. 3. Execute DRC for both the MCT SLX nodes.		

Parent Defect ID:	EFA-9467	Issue ID:	EFA-9467
Severity:	S2 - High		
Product:	Extreme Fabric Automation	Reported in Release:	EFA 2.5.0
Symptom:	When a BGP peer-group create with an invalid MD5 password is attempted on an SLX device via EFA, the creation will fail with a valid error from SLX, resulting in the rollback of the failed operation which further results in a stale/partial configuration "neighbor <peer-group-name>" on the SLX.		
Condition:	Below are the steps to reproduce the issue: 1. Configure a CLOS/Non-CLOS fabric. 2. Create a tenant on the fabric configured in step 1. 3. Create a BGP peer-group (under the ownership of the tenant created in step 2) with an invalid md5 password, which fails with a valid error from SLX device. 4. Failure of (3) results in the "rollback" operation resulting in the removal of peer-group configuration from the SLX device, which further results in a stale/partial SLX configuration "neighbor <peer-group-name>".		

Parent Defect ID:	EFA-9467	Issue ID:	EFA-9467
Workaround:	No workaround.		
Recovery:	On the SLX, use the following commands to remove the partial bgp peer-group configuration. SLX(config)# router bgp SLX(config-bgp-router)# neighbor pg1 peer-group SLX(config-bgp-router)# no neighbor pg1 peer-group		

Parent Defect ID:	EFA-9487	Issue ID:	EFA-9487
Severity:	S2 - High		
Product:	Extreme Fabric Automation	Reported in Release:	EFA 2.5.0
Symptom:	When bgp static peers are created (on a partial success topology) with the target device being admin down device followed by admin up of the admin down device, the dev-state/app-state continue to be not-provisioned/cfg-refreshed instead of provisioned/cfg-in-sync.		
Condition:	This issue can be reproduced with the below steps. 1. Admin down one of the SLX devices of an MCT pair. 2. Create BGP static peers with md5-password with the admin down SLX device as the target device. 3. Admin up the SLX device (which was admin down as mentioned in step 1). 4. After admin up, the BGP static peers' dev-state/app-state moves to not-provisioned/cfg-refreshed instead of it being provisioned/cfg-in-sync.		
Workaround:	Create the bgp static peers with md5-password when all the devices are in admin-up state.		
Recovery:	1. Bring all the devices to the admin up state. 2. Delete the BGP static peers which were created with md5-password when one of the devices was admin down. 3. Recreate the BGP static peers which were created with md5-password when one of the devices was admin down.		

Parent Defect ID:	EFA-9932	Issue ID:	EFA-9932
Severity:	S2 - High		
Product:	Extreme Fabric Automation	Reported in Release:	EFA 2.5.0
Symptom:	System API throws a 502 error after a restore is run.		
Condition:	After executing 'efa system restore', triggering any system API sometimes yield a 502 response.		

Parent Defect ID:	EFA-9941	Issue ID:	EFA-9941
Severity:	S3 - Medium		
Product:	Extreme Fabric Automation	Reported in Release:	EFA 2.4.3

Parent Defect ID:	EFA-9941	Issue ID:	EFA-9941
Symptom:	EPG create with a CEP port (already used in another EPG) fails with the NETCONF RPC Error "NOTAKNOWNRESOURCEID"		
Condition:	1. Create fabric and tenant. 2. Create EPG1 using CEP port. 3. Create EPG2 using the same CEP port.		

Parent Defect ID:	EFA-9944	Issue ID:	EFA-9944
Severity:	S3 – Medium		
Product:	Extreme Fabric Automation	Reported in Release:	EFA 2.5.0
Symptom:	If port channel speed is modified on the device. In the mean time member ports are deleted from PO. Issue DRC from EFA, the DRC will fail with error and PO speed is not get reconciled: "10.20.246.3:ethernet:0/19 to Portchannel po2 failed due to netconf rpc [error] %Error: Port-channel should be admin down for speed to be configured"		
Condition:	Steps to reproduce: 1. Create tenant and PO 2. Modify po speed on SLX config t no int po 112 interface Port-channel 112 speed 100 no shutdown 3. Update inventory 4. Manual DRC		

Parent Defect ID:	EFA-9945	Issue ID:	EFA-9945
Severity:	S3 – Medium		
Product:	Extreme Fabric Automation	Reported in Release:	EFA 2.5.0
Symptom:	Make config changes of channel group mode on SLX for the interface belongs to some PO. Issue DRC from EFA. Drift and reconcile will not detect this change and correct it.		
Condition:	Steps to reproduce: Create tenant and PO Modify channel group mode on SLX config t interface Ethernet 0/17-18 no channel-group channel-group 111 mode passive type standard Update inventory Manual DRC		

Parent Defect ID:	EFA-9968	Issue ID:	EFA-9968
	S2 – High		

Parent Defect ID:	EFA-9968	Issue ID:	EFA-9968
Severity:			
Product:	Extreme Fabric Automation	Reported in Release:	EFA 2.5.0
Symptom:	DRC fail with error "Delete and Update operations are not supported in a singled transaction. Please try them individually."		
Condition:	Below are the steps to reproduce: 1. Create Tenant 2. Create VRF with max-path and graceful-restart-enable 3. Create EPG using VRF created in step 1 4. Take one of the SLX devices to administratively down state 5. Perform VRF Update max-path-add operation to add a different max-path value 6. Perform VRF Update graceful-restart-update to disable graceful-restart 7. Admin up the SLX device which was made administratively down in step 4 and wait for DRC to complete		

Parent Defect ID:	EFA-9974	Issue ID:	EFA-9974
Severity:	S3 – Medium		
Product:	Extreme Fabric Automation	Reported in Release:	EFA 2.5.0
Symptom:	[SQA] DRC after firmware download failed with reason 'drift and reconcile failed due to efa failover'		
Condition:			

Parent Defect ID:	EFA-9988	Issue ID:	EFA-9988
Severity:	S2 – High		
Product:	Extreme Fabric Automation	Reported in Release:	EFA 2.5.0
Symptom:	If the SLX device is in firmware-download-in-progress state, then the DRC (drift and reconcile) fails, But the failure reason is not shown in the DRC output		
Condition:	Trigger drift and reconcile from EFA for the SLX device when the SLX device is in the firmware-download-in-progress-state		

Parent Defect ID:	EFA-10016	Issue ID:	EFA-10016
Severity:	S3 – Medium		
Product:	Extreme Fabric Automation	Reported in Release:	EFA 2.5.0

Parent Defect ID:	EFA-10016	Issue ID:	EFA-10016
Symptom:	BGP Peer creation fails with the error "failed to fetch BgpAddressFamily data" because of the intermittent connectivity loss of EFA with SLX. Rollback also failed leaving the stale config on SLX.		
Condition:	1. Create tenant, po, vrf and epg 2. Create bgp peer group 3. Create bgp peers Create fails because of an intermittent connection issue		

Parent Defect ID:	EFA-10018	Issue ID:	EFA-10018
Severity:	S3 – Medium		
Product:	Extreme Fabric Automation	Reported in Release:	EFA 2.5.0
Symptom:	Deployment may fail in the step "Checking default gateway reachability on all nodes" due to network reachability issue with gateway		
Condition:	Network reachability issue with gateway will cause deployment failure		

Parent Defect ID:	EFA-10022	Issue ID:	EFA-10022
Severity:	S3 – Medium		
Product:	Extreme Fabric Automation	Reported in Release:	EFA 2.5.0
Symptom:	questions on EFA for static vs dynamic LAG delay		
Condition:			

Parent Defect ID:	EFA-10041	Issue ID:	EFA-10041
Severity:	S2 – High		
Product:	Extreme Fabric Automation	Reported in Release:	EFA 2.5.0
Symptom:	The "efa inventory device tpvm-upgrade execute" command to upgrade to a new tpvm version will result in a failed tpvm upgrade where the previous tpvm image will be rolled back and restored.		
Condition:	The "trusted peer" TPVM running-configuration has not been applied to either SLX device hosting the TPVMs installed with an EFA multi-node deployment.		

Parent Defect ID:	EFA-10052	Issue ID:	EFA-10052
Severity:	S3 – Medium		
Product:	Extreme Fabric Automation	Reported in Release:	EFA 2.5.0

Parent Defect ID:	EFA-10052	Issue ID:	EFA-10052
Symptom:	After upgrade EFA from pre-2.5.0 to 2.5.0, the "Fabric Status" in "efa fabric show" is shown as "configure-success".		
Condition:	There is a new field "Fabric Status" introduced in 2.5.0. After upgrade from pre-2.5.0 to 2.5.0, the "Fabric Status" in "efa fabric show" is showing as "configure-success".		

Parent Defect ID:	EFA-10064	Issue ID:	EFA-10064
Severity:	S2 - High		
Product:	Extreme Fabric Automation	Reported in Release:	EFA 2.5.0
Symptom:	During the required fullinstall firmware download of SLXOS from 20.2.3f to 20.3.2a the TPVM configuration through exec-mode commands are not converted to the running-config.		
Condition:	When a firmware download is run using the fullinstall option.		

Parent Defect ID:	EFA-10067	Issue ID:	EFA-10067
Severity:	S2 - High		
Product:	Extreme Fabric Automation	Reported in Release:	EFA 2.5.0
Symptom:	In a node replacement scenario, the standby node will not have a TPVM configured nor running. When the "efa inventory device tpvm-upgrade" command is run against this replacement node, the TPVM deployment and upgrade to the new TPVM version fails.		
Condition:	The TPVM is neither configured nor running on the switch.		

Parent Defect ID:	EFA-10071	Issue ID:	EFA-10071
Severity:	S3 - Medium		
Product:	Extreme Fabric Automation	Reported in Release:	EFA 2.5.0
Symptom:	[EFA] - High CPU on logrotate - making EFA slow		
Condition:			

Parent Defect ID:	EFA-10073	Issue ID:	EFA-10073
Severity:	S3 - Medium		
Product:	Extreme Fabric Automation	Reported in Release:	EFA 2.5.0

Parent Defect ID:	EFA-10073	Issue ID:	EFA-10073
Symptom:	Getting Error : Port :172.16.18.3:port-channel:1 ClientID : 1001 already configured, conflicting with tenant-service generated ID 1		
Condition:			

Parent Defect ID:	EFA-10094	Issue ID:	EFA-10094
Severity:	S3 - Medium		
Product:	Extreme Fabric Automation	Reported in Release:	EFA 2.5.0
Symptom:	In a fabric-wide firmware download, other firmware download operations such as firmware commit and restore error out stating that a firmware download execution is in progress. However, after the active EFA node switch is upgraded and rebooted, this check is no longer enforced and other firmware download operations are allowed even though the fabric-wide firmware download operation is still in progress.		
Condition:	A fabric-wide firmware download execution where the active EFA node switch is included.		

Parent Defect ID:	EFA-10099	Issue ID:	EFA-10099
Severity:	S2 - High		
Product:	Extreme Fabric Automation	Reported in Release:	EFA 2.5.0
Symptom:	When the md5-password is updated on an already provisioned fabric, the existing tenant vrf backup routing bgp neighbours will be updated with the new md5-password followed by the clearing of the bgp neighbours. Updation of md5-password and clearing of the corresponding bgp neighbours happens one SLX device at a time, hence resulting in the session being down time till the process is complete for both the devices of the MCT pair.		
Condition:	1. Configure fabric with the fabric setting backup routing enabled and with the md5-password fabric setting 2. Configure tenant under the fabric 3. Configure VRF and L3 EPG (using the VRF and under the ownership of the tenant), which results in the creation of the backup routing bgp neighbours (for the tenant vrf) using the md5-password provided at the fabric setting 4. Update md5-password on the already provisioned fabric followed by "fabric configure"		

Parent Defect ID:	EFA-10115	Issue ID:	EFA-10115
Severity:	S3 - Medium		
Product:	Extreme Fabric Automation	Reported in Release:	EFA 2.5.0

Parent Defect ID:	EFA-10115	Issue ID:	EFA-10115
Symptom:	Redeployment of EFA 2.5.0 fails on a multi-node when one of the nodes in the cluster is changed.		
Condition:	After un-deployment of multi-node EFA, if a fresh deployment is triggered after changing one of the nodes or its IP in the cluster, then installation fails.		

Parent Defect ID:	EFA-10121	Issue ID:	EFA-10121
Severity:	S2 – High		
Product:	Extreme Fabric Automation	Reported in Release:	EFA 2.5.0
Symptom:	TPVM and Apps/EFA running in TPVM, will be removed after copy default-config startup-config" and "reload system" commands on SLX.		
Condition:	If copy default-config startup-config is run on the SLX device that is hosting a TPVM, the TPVM and applications/EFA running within, will be removed after "reload system"		

Parent Defect ID:	EFA-10126	Issue ID:	EFA-10126
Severity:	S3 - Medium		
Product:	Extreme Fabric Automation	Reported in Release:	EFA 2.5.0
Symptom:	Users might see a failure message when doing a node replacement when running the installer in GUI mode, when the progress is around 18% although the node replacement proceeds		
Condition:	This error message is not expected and is not consistently seen, however this issue is not a functional issue but more of a display issue		

Parent Defect ID:	EFA-10135	Issue ID:	EFA-10135
Severity:	S3 – Medium		
Product:	Extreme Fabric Automation	Reported in Release:	EFA 2.5.0
Symptom:	Efa system - manual setting of backup schedule not taken into use		
Condition:			

Parent Defect ID:	EFA-10137	Issue ID:	EFA-10137
Severity:	S3 – Medium		
Product:	Extreme Fabric Automation	Reported in Release:	EFA 2.5.0
Symptom:	Efa fabric device add-bulk failed with Validate Fabric [Failed] Missing Links		
Condition:			

Parent Defect ID:	EFA-10139	Issue ID:	EFA-10139
	S3 – Medium		

Parent Defect ID:	EFA-10139	Issue ID:	EFA-10139
Severity:			
Product:	Extreme Fabric Automation	Reported in Release:	EFA 2.5.0
Symptom:	efa fabric device add-bulk failed with Server unreachable during leaf-pair expansion		
Condition:			

Parent Defect ID:	EFA-10141	Issue ID:	EFA-10141
Severity:	S3 – Medium		
Product:	Extreme Fabric Automation	Reported in Release:	EFA 2.5.0
Symptom:	[EFA] - HA Deployment 2.5.0 - Configuring database server Failed		
Condition:			

Parent Defect ID:	EFA-10142	Issue ID:	EFA-10142
Severity:	S3 – Medium		
Product:	Extreme Fabric Automation	Reported in Release:	EFA 2.5.0
Symptom:	Journals are kept under pending status even though dynamic marking of failure when the parent journal fails		
Condition:			

Parent Defect ID:	EFA-10143	Issue ID:	EFA-10143
Severity:	S3 – Medium		
Product:	Extreme Fabric Automation	Reported in Release:	EFA 2.5.0
Symptom:	Modifications needed in the current efa-journal Table display entries		
Condition:			

Parent Defect ID:	EFA-10206	Issue ID:	EFA-10206
Severity:	S3 – Medium		
Product:	Extreme Fabric Automation	Reported in Release:	EFA 2.5.0
Symptom:	[EFA 2.4 -> 2.5] KeepAlived log files changed to check reachability of Peer or GW is not updated any more		
Condition:			

Parent Defect ID:	EFA-10243	Issue ID:	EFA-10243
Severity:	S2 - High		
Product:	Extreme Fabric Automation	Reported in Release:	EFA 2.5.1

Parent Defect ID:	EFA-10243	Issue ID:	EFA-10243
Symptom:	Portchannels, EndpointGroups port configuration is not reconciled on SLX		
Condition:	Below are the steps to reproduce the issue: 1. Create Tenant, Portchannels and/or EndpointGroups 2. Log in to SLX and convert non-breakout ports used in step 1 to breakout ports or breakout ports used in step1 to non-breakout ports (as applicable) and then perform "efa inventory device update" for the same SLX. 3. Log in to SLX and convert non-breakout ports back to breakout ports or breakout ports back to non-breakout ports (as applicable) and then perform "efa inventory device update" for the same SLX. 4. On EFA, perform drift-and-reconcile for the SLX device on which the drift was introduced in step 2 and the drift was corrected in step 3.		
Workaround:	No workaround		
Recovery:	Add the deleted interfaces configuration on Portchannels and/or EndpointGroups from EFA again		

Parent Defect ID:	EFA-10266	Issue ID:	EFA-10266
Severity:	S2 - High		
Product:	Extreme Fabric Automation	Reported in Release:	EFA 2.5.1
Symptom:	When concurrent EPG update on bd-enabled tenant with vrf-add operation is requested where the commands involve large number of vlans, local-ip and anycast-ip addresses, one of them may fail with the error "EPG: <epg-name> Save for Vlan Records save Failed".		
Condition:	The failure is reported when concurrent DB write operation are done by EFA Tenant service as part of the command execution.		
Workaround:	This is a transient error and there is no workaround. The failing command can be executed once again and it will succeed.		
Recovery:	The failing command can be rerun separately and it will succeed.		

Parent Defect ID:	EFA-10267	Issue ID:	EFA-10267
Severity:	S3 - Medium		
Product:	Extreme Fabric Automation	Reported in Release:	EFA 2.5.0
Symptom:	[EFA] Inconsistencies OpenAPI definition		

Parent Defect ID:	EFA-10284	Issue ID:	EFA-10284
Severity:	S2 - Major		
Product:	Extreme Fabric Automation	Reported in Release:	EFA 2.5.1

Parent Defect ID:	EFA-10284	Issue ID:	EFA-10284
Symptom:	<p>When a bgp peer-group update operations are performed after the device is admin down, the entire config from admin up device gets deleted.</p> <p>Steps to reproduce this issue:</p> <ol style="list-style-type: none"> 1. Create bgp peer group 2. Admin down both devices 3. peer add fails with appropriate message 4. Admin up one of the devices 5. perform peer-group add 6. update bgp peer group to delete the peer that was created in step 1 for both devices 7. perform bgp configure operation while one of the devices is still in admin down state <p>After performing the configure operation when one of the devices is still down, the entire config from admin up device gets deleted.</p>		
Condition:	<p>Create a bgp peer group and then put one of the devices into admin down state. Then perform update operation on both devices</p> <p>After which perform a configure bgp peer-group operation while one of the devices are still down.</p> <p>The entire config from the device which is still in admin up state gets deleted.</p> <p>The peers which are in sync and configured on the switch for the admin up device must not be deleted but as the bgp peer-group goes into delete pending state, the entire config gets deleted.</p>		
Workaround:	The devices need to be in admin up state for the update with peer-group-delete operation to be performed.		
Recovery:	The bgp peer-group which has been deleted will need to be re-created.		

Parent Defect ID:	EFA-10285	Issue ID:	EFA-10285
Severity:	S3 - Medium		
Product:	Extreme Fabric Automation	Reported in Release:	EFA 2.5.0
Symptom:	[EFA] Slow upgrade of SLX OS on EFA - 6 hours for 18 switches		
Condition:			

Parent Defect ID:	EFA-10289	Issue ID:	EFA-10289
Severity:	S3 - Medium		
Product:	Extreme Fabric Automation	Reported in Release:	EFA 2.5.0
Symptom:	EFA performs "copy running-config startup-config" after firmware download is started (just before reload) which causes config loss during SLX full install scenario		
Condition:			

Parent Defect ID:	EFA-10304	Issue ID:	EFA-10304
Severity:	S3 - Medium		
Product:	Extreme Fabric Automation	Reported in Release:	EFA 2.5.0

Parent Defect ID:	EFA-10304	Issue ID:	EFA-10304
Symptom:	NTP configuration present on SLX is not considered by EFA for DRC		
Condition:			

Parent Defect ID:	EFA-10358	Issue ID:	EFA-10358
Severity:	S3 - Medium		
Product:	Extreme Fabric Automation	Reported in Release:	EFA 2.5.0
Symptom:	SLX upgrade to 20.3.2A - traffic outage + Maintenance Mode Disable Failed		
Condition:			

Parent Defect ID:	EFA-10365	Issue ID:	EFA-10365
Severity:	S2 - Major		
Product:	Extreme Fabric Automation	Reported in Release:	EFA 2.4.6
Symptom:	Found cluster in unstable state after spontaneous + ~simultaneous reboot.		

Parent Defect ID:	EFA-10370	Issue ID:	EFA-10370
Severity:	S3 - Medium		
Product:	Extreme Fabric Automation	Reported in Release:	EFA 2.5.1
Symptom:	A tpvm-upgrade and firmware-download execution can be launched simultaneously which could possibly lead to both EFA HA nodes going down at the same time.		
Condition:	Running a tpvm-upgrade and firmware-download execution simultaneously.		
Workaround:	Do not execute a tpvm-upgrade and firmware-download simultaneously for the same fabric.		

Parent Defect ID:	EFA-10380	Issue ID:	EFA-10380
Severity:	S2 - Major		
Product:	Extreme Fabric Automation	Reported in Release:	EFA 2.5.1
Symptom:	When preparing the fabric for a firmware-download where the fabric has more than 10 devices, up to 10 devices will be prepared successfully but the rest of the devices will error out stating "Cannot find firmware. The server is inaccessible or firmware path is invalid. Please make sure the server name or IP address, the user/password and the firmware path are valid."		

Parent Defect ID:	EFA-10380	Issue ID:	EFA-10380
Condition:	<p>The firmware-host is registered to use the SCP protocol and the firmware-host has an unset or default "MaxStartups" config in the /etc/ssh/sshd_config file. The default "MaxStartups" is typically "10:30:60" when the configuration is not set.</p> <p>MaxStartup Configuration:</p> <ol style="list-style-type: none"> 1) "Start" - 10: The number of unauthenticated connections allowed. 2) "Rate" - 30: The percent chance that the connection is dropped after the "Start" connections are reached which linearly increases thereafter. 3) "Full" - 60: The maximum number of connections after which all subsequent connections are dropped. 		
Workaround:	<p>Edit the /etc/ssh/sshd_config and specify an appropriate "MaxStartups" configuration on the firmware-host. An appropriate value would be: "Full" is greater than "Start" and "Start" is greater than the number of devices in the fabric. After the /etc/ssh/sshd_config file is edited, restart the sshd service for the changes to take effect. The sshd service restart will not affect currently connected ssh sessions.</p>		

Parent Defect ID:	EFA-10403	Issue ID:	EFA-10403
Severity:	S2 - High		
Product:	Extreme Fabric Automation	Reported in Release:	EFA 2.5.1
Symptom:	EFA fabric state shows as "cfg-refreshed", and there is drift in the configuration identified by EFA compare with SLX.		
Condition:	when EFA is upgraded to 2.5.1, with configured BFD and MCT clusters.		
Workaround:	None		
Recovery:	Execute Manual Drift/Reconcile step, EFA fabric state shows as "cfg-sync", and all the configurations are in sync between EFA and SLX.		

Parent Defect ID:	EFA-10412	Issue ID:	EFA-10412
Severity:	S3 - Medium		
Product:	Extreme Fabric Automation	Reported in Release:	EFA 2.5.1
Symptom:	While polling the "efa inventory device firmware-download show" command, the user can sometimes observe the firmware download status change to the "Firmware Committed" status completion after the device has been reloaded with the new firmware during the workflow, but then change back and continue to the end.		
Condition:	The device has reloaded and boots up completely with the new firmware. After the this time, the firmware may become committed and the status is updated before the drift-reconciliation completion check status starts.		

Parent Defect ID:	EFA-10446	Issue ID:	EFA-10446
Severity:	S2 - Major		
Product:	Extreme Fabric Automation	Reported in Release:	EFA 2.5.1
Symptom:	Issue with CLOS Spine SLX upgrade via EFA 2.5.1 - Upgrade complete - status down.		

Parent Defect ID:	EFA-10451	Issue ID:	EFA-10451
Severity:	S3 - Moderate		
Product:	Extreme Fabric Automation	Reported in Release:	EFA 2.5.1
Symptom:	The tpvm-upgrade command fails during the device "TPVM Upgrade" step with a "Detailed Status" of "device tpvm upgrade has completed, but the trusted peer configuration could not be reconfigured on the device."		
Condition:	The TPVM running-config on the SLX device contains an encoded password string with '<' or '>' characters in any of the encoded password configurations.		
Workaround:	Reconfigure the TPVM running-config password field such that the encoded password string does not contain any '<' or '>' characters.		

Parent Defect ID:	EFA-10452	Issue ID:	EFA-10452
Severity:	S2 - High		
Product:	Extreme Fabric Automation	Reported in Release:	EFA 2.5.0
Symptom:	EFA 2.5.1 - SLX-OS : 20.2.3fa --> 20.3.2b upgrade issues		

Parent Defect ID:	EFA-10456	Issue ID:	EFA-10456
Severity:	S3 - Medium		
Product:	Extreme Fabric Automation	Reported in Release:	EFA 2.5.1
Symptom:	'efa inventory device firmware-download show' loses info about switches upgraded but not committed.		

Parent Defect ID:	EFA-10459	Issue ID:	EFA-10459
Severity:	S3 - Medium		
Product:	Extreme Fabric Automation	Reported in Release:	EFA 2.5.0

Parent Defect ID:	EFA-10459	Issue ID:	EFA-10459
Symptom:	Tenant creation fails: Error: sql: transaction has already been committed or rolled back		
Condition:	Tenant creation fails: Error: sql: transaction has already been committed or rolled back		

Parent Defect ID:	EFA-10461	Issue ID:	EFA-10461
Severity:	S2 - High		
Product:	Extreme Fabric Automation	Reported in Release:	EFA 2.5.1
Symptom:	DRC is incorrectly reconciling ports resulting in SLX stuck in maintenance mode		
Condition:	DRC is incorrectly reconciling ports resulting in SLX stuck in maintenance mode		

Parent Defect ID:	EFA-10466	Issue ID:	EFA-10466
Severity:	S3 - Medium		
Product:	Extreme Fabric Automation	Reported in Release:	EFA 2.5.0
Symptom:	what are the different stages during FWDL of status field		
Condition:	what are the different stages during FWDL of status field		

Parent Defect ID:	EFA-10468	Issue ID:	EFA-10468
Severity:	S3 - Moderate		
Product:	Extreme Fabric Automation	Reported in Release:	EFA 2.5.2
Symptom:	When the MCT Port channel attribute like description, speed is changed by user through SLX CLI or other out of band means, "efa fabric show --name fabric_name" doesn't show the app state of the device as "cfg refreshed". When the MCT Port channel member attribute like port description, lacp mode, lacp timeout or lacp type is changed by user through SLX CLI or other out of band means, "efa fabric show --name fabric_name" doesn't show the app state of the device as "cfg refreshed".		
Condition:	This is seen when user explicitly updates the Port channel or Port channel member attributes specified in Symptom section through SLX CLI or other non-EFA means.		

Parent Defect ID:	EFA-10468	Issue ID:	EFA-10468
Workaround:	The configuration drifted for Port channel attribute description, speed and Port channel member attribute like description, lacp mode, lacp timeout or lacp type will be reconciled either by a periodic device update or user can explicitly trigger a DRC on the devices where the MCT PO is configured on.		
Recovery:	The configuration drifted for Port channel attribute description, speed and Port channel member attribute like description, lacp mode, lacp timeout or lacp type will be reconciled either by a periodic device update or user can explicitly trigger a DRC on the devices where the MCT PO is configured on.		

Parent Defect ID:	EFA-10473	Issue ID:	EFA-10473
Severity:	S3 - Medium		
Product:	Extreme Fabric Automation	Reported in Release:	EFA 2.4.6
Symptom:	attempting to update the description field for a peer-group		
Condition:	attempting to update the description field for a peer-group		

Parent Defect ID:	EFA-10503	Issue ID:	EFA-10503
Severity:	S3 - Medium		
Product:	Extreme Fabric Automation	Reported in Release:	EFA 2.5.1
Symptom:	Stop/Start the TPVM executed on the EFA standby node causes HA failover.		
Condition:	Stop/Start the TPVM executed on the EFA standby node causes HA failover.		

Parent Defect ID:	EFA-10504	Issue ID:	EFA-10504
Severity:	S2 - High		
Product:	Extreme Fabric Automation	Reported in Release:	EFA 2.5.1
Symptom:	drift reconcile loses native-vlan setting (EFA upgrade & switch reload)		
Condition:	drift reconcile loses native-vlan setting (EFA upgrade & switch reload)		

Parent Defect ID:	EFA-10521	Issue ID:	EFA-10521
Severity:	S3 - Moderate		
Product:	Extreme Fabric Automation	Reported in Release:	EFA 2.5.1
Symptom:	DRC fails after SLX upgrade (via EFA) from 20.2.3d to 20.2.3fa		

Parent Defect ID:	EFA-10521	Issue ID:	EFA-10521
Condition:	<p>The following error is observed in rabbitmq log file(<Logs directory>/rabbitmq/rabbit@<active-rabbitmq-pod-name>.efa.svc.cluster.local.log) {handshake_error,opening, {amqp_error,internal_error, "access to vhost '/' refused for user 'rabbitmq': vhost '/' is down", 'connection.open'}} The following messages are observed in all the service log files. Attempting to reconnect to the AMQP server before consuming from DC_APP_Events_Q. Unable to reconnect to the AMQP exchange DC_APP_Events_Exchange before publish. Exception (403) Reason: \"no access to this vhost\""} </p>		
Recovery:	<p>For TPVM installation, sudo rm -rf /apps/efadata/misc/rabbitmq/mnesia/ For Server installation, sudo rm -rf /opt/efadata/misc/rabbitmq/mnesia/ Run command, k3s kubectl -n efa get pods -o wide grep rabbitmq Get the name of the pod which is in 'Running' state. k3s kubectl -n efa delete pod/<Name of the rabbitmq pod> Run 'efa status' to check if the system is up.</p>		

Parent Defect ID:	EFA-10524	Issue ID:	EFA-10524
Severity:	S3 - Moderate		
Product:	Extreme Fabric Automation	Reported in Release:	EFA 2.5.0
Symptom:	efa fabric delete" returns "Bad Gateway"		

Parent Defect ID:	EFA-10532	Issue ID:	EFA-10532
Severity:	S3 - Moderate		
Product:	Extreme Fabric Automation	Reported in Release:	EFA 2.5.2
Symptom:	Subinterfaces and virtual routes are not available after 'efa restore' with system generated backup file.		
Condition:	<p>When EFA is upgraded to a newer version, EFA backup is taken before the upgrade procedure is triggered. The backup file is named "EFA-Upgrade-<Version>-<Build>.tar". If restore is performed using this backup file, then management subinterfaces and routes will not be available.</p>		
Workaround:	For restore procedure, use any 'User' generated backup file.		
Recovery:	In case the restore is already performed, then recreate the subinterfaces and routes using CLI.		

Parent Defect ID:	EFA-10537	Issue ID:	EFA-10537
Severity:	S4 - Minor		
Product:	Extreme Fabric Automation	Reported in Release:	EFA 2.5.2

Parent Defect ID:	EFA-10537	Issue ID:	EFA-10537
Symptom:	The command "efa inventory device firmware-download prepare add" fails with "Duplicate entry for key device_id".		
Condition:	The user issues the "efa inventory device firmware-download prepare add" command and does not let the command finish by issuing a CTRL-C. Attempts to prepare the same device again may error out.		
Workaround:	Do not issue CTRL-C while preparing devices for a firmware download and allow the command to finish.		
Recovery:	Remove the prepared entry exhibiting the symptom using "efa inventory device firmware-download prepare remove --ip <Device IP Address>", then prepare the device.		

Parent Defect ID:	EFA-10540	Issue ID:	EFA-10540
Severity:	S3 - Moderate		
Product:	Extreme Fabric Automation	Reported in Release:	EFA 2.5.2
Symptom:	The firmware-download restore command does not wait for drift-reconciliation completion even though the restore workflow for the device states that it is completed successfully.		
Condition:	Running "efa inventory device firmware-download restore" on one or more devices.		
Workaround:	Use the "efa inventory drift-reconcile history" command to monitor the drift reconciliation completion of a device. Once drift-reconciliation has completed, the next batch of devices can be restored.		

Parent Defect ID:	EFA-10542	Issue ID:	EFA-10542
Severity:	S3 - Moderate		
Product:	Extreme Fabric Automation	Reported in Release:	EFA 2.5.2
Symptom:	DRC is not reconciling VLAN configs on phy ports or port-channels for VLAN based network EPGs.		
Condition:	<ol style="list-style-type: none"> 1. Create VLAN based Network EPGs with port-channel or ethernet ports 2. Introduce either of the below drifts on SLX <ol style="list-style-type: none"> a. Delete the port-channel b. Perform "no switchport" under port-channel / ethernet port 3. Execute DRC 		
Workaround:	No workaround is available		
Recovery:	<ol style="list-style-type: none"> 1. Perform "no vlan " operation for all the VLANs which are missed to be configured on port-channel/ports 2. Perform DRC to reconcile the VLAN and the VLAN configs on port-channel/ports 		

Parent Defect ID:	EFA-10552	Issue ID:	EFA-10552
	S2 - Major		

Parent Defect ID:	EFA-10552	Issue ID:	EFA-10552
Severity:			
Product:	Extreme Fabric Automation	Reported in Release:	EFA 2.5.1
Symptom:	.SLX upgrade (via EFA) from 20.2.3d to 20.2.3fa failed with DRC timeout		

Parent Defect ID:	EFA-10573	Issue ID:	EFA-10573
Severity:	S3 - Moderate		
Product:	Extreme Fabric Automation	Reported in Release:	EFA 2.5.1
Symptom:	EFA port dampening - does not throw error in case of invalid command syntax		

Parent Defect ID:	EFA-10585	Issue ID:	EFA-10585
Severity:	S3 - Moderate		
Product:	Extreme Fabric Automation	Reported in Release:	EFA 2.5.2
Symptom:	VLAN and Ve conf for one Border Leaf is also pushed to the other		

Parent Defect ID:	EFA-10587	Issue ID:	EFA-10587
Severity:	S4 - Minor		
Product:	Extreme Fabric Automation	Reported in Release:	EFA 2.5.1
Symptom:	.EFA Periodic Backup shown as User Generated		

Parent Defect ID:	EFA-10591	Issue ID:	EFA-10591
Severity:	S2 - Major		
Product:	Extreme Fabric Automation	Reported in Release:	EFA 2.5.2
Symptom:	EFA 2.5.2 Re-deploy post a TPVM Rollback failed on first attempt. Failed to start efa services		

Parent Defect ID:	EFA-10614	Issue ID:	EFA-10614
Severity:	S3 - Moderate		
Product:	Extreme Fabric Automation	Reported in Release:	EFA 2.5.1
Symptom:	efa command fails with "dial tcp xx.xx.xx.xx:80: connect: connection refused" message		

Parent Defect ID:	EFA-10618	Issue ID:	EFA-10618
	S3 - Moderate		

Parent Defect ID:	EFA-10618	Issue ID:	EFA-10618
Severity:			
Product:	Extreme Fabric Automation	Reported in Release:	EFA 2.5.2
Symptom:	.EFA - Border-Leaf role missing from software - efa inventory device list		

Parent Defect ID:	EFA-10682	Issue ID:	EFA-10682
Severity:	S3 - Moderate		
Product:	Extreme Fabric Automation	Reported in Release:	EFA 2.5.1
Symptom:	.EPG cannot be created only with the non-existing port channel name		

Parent Defect ID:	EFA-10691	Issue ID:	EFA-10691
Severity:	S2 - Major		
Product:	Extreme Fabric Automation	Reported in Release:	EFA 2.5.2
Symptom:	EFA CLI error response: Service Unavailable		

Parent Defect ID:	EFA-10696	Issue ID:	EFA-10696
Severity:	S3 - Moderate		
Product:	Extreme Fabric Automation	Reported in Release:	EFA 2.5.2
Symptom:	SLX hangs in maintenance mode for about 1 hour after reboot		

Defects Closed without Code Changes

The following defects were closed in Extreme Fabric Automation 2.5.0, 2.5.1, 2.5.2, and 2.5.3.

Parent Defect ID:	EFA-5841	Issue ID:	EFA-5841
Reason Code:	Working as Designed	Severity:	S2 - High
Product:	Extreme Fabric Automation	Reported in Release:	EFA 2.2.0
Symptom:	When firmware download is in progress, tenant create command is accepted without an error.		
Condition:	If tenant commands are submitted when firmware download is in progress, it results in erroneous configuration and some configurations may miss.		

Parent Defect ID:	EFA-5841	Issue ID:	EFA-5841
Workaround:	Allow firmware download process to complete. Status of the same can be checked using command efa inventory device firmware-download show --fabric {fabric name}		
Recovery:	Tenant commands can be submitted after the firmware download is completed		

Parent Defect ID:	EFA-5874	Issue ID:	EFA-5874
Reason Code:	Already Implemented	Severity:	S3 - Medium
Product:	Extreme Fabric Automation	Reported in Release:	EFA 2.2.0
Symptom:	On device registration, the IP of the EFA system is recorded in the logging entry on the device so logs can be forwarded to the EFA system for notification. When the EFA system is backed up and restored on another system with a different IP, the old IP of the EFA system is still present on the devices and the devices will continue to forward logs to the old EFA IP.		
Workaround:	Users will have to manually login to each devices and remove the logging entry for the old EFA IP.		

Parent Defect ID:	EFA-7592	Issue ID:	EFA-7592
Reason Code:	Working as Designed	Severity:	S3 - Medium
Product:	Extreme Fabric Automation	Reported in Release:	EFA 2.3.2
Symptom:	"dev-state/app-state" moved to not-provisioned/cfg-ready		
Condition:	1) Configure non-clos fabric 2) Create tenant, vrf, epG 3) Admin down device 4) Create multiple epG's , delete an existing epG 5) Manually delete vrf from admin down device 6) Admin up device 7) After admin up, for epG which is in delete-pending the app-state moved to cfg-ready		
Workaround:	wait for few minutes after epG delete, before admin up of the device.		
Recovery:	force delete the EPGs in question and recreate them.		

Parent Defect ID:	EFA-8319	Issue ID:	EFA-8319
Reason Code:	Not Reproducible	Severity:	S2 - High
Product:	Extreme Fabric Automation	Reported in Release:	EFA 2.4.0
Symptom:	PO creation failed with error "Devices are not MCT Pairs".		

Parent Defect ID:	EFA-8319	Issue ID:	EFA-8319
Condition:	Please follow below steps, 1) Create fabric/tenant/PO/EPG 2) Take EFA backup 3) Delete EPG/PO/tenant/fabric 4) Restore EFA backup taken in step (2) 5) Delete tenant from which was created before backup 6) Create same tenant again 7) Create PO under same tenant		
Workaround:	As after restore MCT peer details are Nil so we need to perform DRC after restore taken backup. After step (4) above, we need to perform DRC using inventory CLI as efa inventory drift-reconcile execute --ip <device ip 1> --reconcile efa inventory drift-reconcile execute --ip <device ip 2> --reconcile		

Parent Defect ID:	EFA-8754	Issue ID:	EFA-8754
Reason Code:	Not Reproducible	Severity:	S2 - High
Product:	Extreme Fabric Automation	Reported in Release:	EFA 2.4.1
Symptom:	Shutting both mgmt and RME ports can occasionally cause EFA's kubernetes deployment to become stuck in an initializing state.		
Condition:	Turning off and on both mgmt and RME ports.		
Recovery:	Restart kubernetes on both nodes of the cluster. As root user: \$ systemctl restart k3s		

Parent Defect ID:	EFA-8967	Issue ID:	EFA-8967
Reason Code:	Working as Designed	Severity:	S4 - Low
Product:	Extreme Fabric Automation	Reported in Release:	EFA 2.4.2
Symptom:	Error during epg update ctag-range-add operation if different anycastIP is provided for new ctag range with same l2-vni already configured in EPG. Ex. Error : EPG: e1(11:11.11.11.1/24) shares network name with EPG: e1(10:10.10.10.1/24) should have same Anycast IP		
Condition:	1. Create L3 EPG epg1 with ctag-1, l2vni-1, anycastIP1 2. Update EPG epg1 with ctag-2, l2vni-1, anycastIP2 For the same l2vni, anycastIP must be the same, the same condition will be verified as part of epg validation which provided above-mentioned error.		

Parent Defect ID:	EFA-8967	Issue ID:	EFA-8967
Workaround:	1. For same l2vni, anycastIP must be same. 2. Different l2-vni can be used for using different anycastIP.		
Recovery:	NA		

Parent Defect ID:	EFA-9045	Issue ID:	EFA-9045
Reason Code:	Insufficient Information	Severity:	S3 - Medium
Product:	Extreme Fabric Automation	Reported in Release:	EFA 2.4.2
Symptom:	1. "app-state" of some of the VRFs is shown as "cfg-refreshed" in "efa tenant vrf show" output. 2. The same VRFs whose "app-state" is shown as "cfg-refreshed" are shown as "unstable" VRFs in the "efa tenant epg show" output.		
Condition:	1. Create an 18 node CLOS fabric. 2. Create multiple tenants (e.g. 14) tenants under the fabric created in step 1. 3. Create multiple VRFs (e.g. 400+) under the tenant created in step 2. 4. Create multiple EPGs using the VRFs created in step 3. 5. Check the "efa tenant vrf show" output to know the "app-state" of the VRFs.		
Workaround:	No workaround.		
Recovery:	1. Check the configuration drift per SLX device using the CLI "efa inventory drift-reconcile execute --ip <slx-device-ip>" to identify if the VRFs (which are in the cfg-refreshed state) are shown in the drift output. 2. If the VRFs are shown in the drift output for a given SLX device, then delete the VRFs from that particular SLX device. 3. Perform DRC (Drift and Reconcile) for the SLX device from which the unstable VRFs were deleted. 4. Steps 3 and 4 need to be done for all the SLX devices.		

Parent Defect ID:	EFA-9227	Issue ID:	EFA-9227
Reason Code:	Working as Designed	Severity:	S3 - Medium
Product:	Extreme Fabric Automation	Reported in Release:	EFA 2.5.0
Symptom:	After the service restart, the inflight operations i.e "VRF update max-path-delete" or "VRF update rh-max-path-delete" are rolled forward instead of rollback.		
Condition:	When "VRF Update max-path-delete" or "VRF Update rh-max-path-delete" operation is executed and the tenant service gets restarted while the operation is in progress.		
Workaround:	No workaround		
Recovery:	No recovery		

Parent Defect ID:	EFA-9669	Issue ID:	EFA-9669
	Insufficient Information	Severity:	S2 - High

Parent Defect ID:	EFA-9669	Issue ID:	EFA-9669
Reason Code:			
Product:	Extreme Fabric Automation	Reported in Release:	EFA 2.5.0
Symptom:	Network and router creation during EFA HA fail-over, stale entries Steps: Started script/stack to create networks and routers Did HA fail over when network/router creation was in progress Few network and router creations failed.		
Condition:	EFA HA Failover during stack creation can result in failed network and router entries at OpenStack. EFA services will be down for few minutes during HA failover, resulting in the failures.		
Workaround:	No workaround. This is expected behavior during EFA HA failover.		
Recovery:	Delete and recreate the network/router entries at OpenStack after EFA HA failover is complete. Use 'efa-health show' to check EFA HA status.		

Parent Defect ID:	EFA-9966	Issue ID:	EFA-9966
Reason Code:	Insufficient Information	Severity:	S2 - High
Product:	Extreme Fabric Automation	Reported in Release:	EFA 2.5.0
Symptom:	In 2.4.x, adding the same ports/pos with different native vlan was allowed without any validation, this leads to two possible issues: 1. Adding the same ports/PO to multiple eggs with different native-vlan VLAN results in the initial input native vlan being overwritten with the latest native vlan value onto the SLX. 2. Adding the same port/po to multiple eggs, the first epg being created with native VLAN and the second EPG being created without native VLAN, will result in removal of native VLAN configured as part of the first epg after upgrading to 2.5.0 and reloading system with maintenance mode enabled.		

Parent Defect ID:	EFA-9966	Issue ID:	EFA-9966
Condition:	<p>Case1:</p> <ol style="list-style-type: none"> 1. Create fabric, tenant 2. Create PO1 with Device1Port1 3. Create PO2 with Device1Port2 4. Create EPG1 with PO1, PO2, CTAG1, CTAG2 with "switchport mode trunk", and native vlan as CTAG1 5. Create EPG2 with PO2, CTAG3, CTAG4 with native vlan CTAG3 6. On the SLX, PO2 initial native vlan CTAG1 gets replaced with CTAG3, while PO1 will have the initial native vlan CTAG1 <p>Case2:</p> <ol style="list-style-type: none"> 1. Create fabric, tenant. 2. Create PO1 with Device1Port1 3. Create PO2 with Device1Port2 4. Create EPG1 with PO1, PO2, CTAG1, CTAG2 with "switchport mode trunk" and native vlan as CTAG1 5. Create EPG2 with PO2 CTAG3, CTAG4 without native vlan 6. Upgrade EFA to version 2.5.0 7a. Reload SLX with maintenance mode enable-on-reboot so that the auto DRC (Drift and ReConcile) gets triggered or 7b. Reload SLX and perform manual DRC 8. On the SLX, PO2 initial native vlan CTAG1 gets replaced with the default value, while PO1 will have the initial native vlan CTAG1 		
Workaround:	The workaround is not available.		
Recovery:	<ol style="list-style-type: none"> 1. Identify EPGs with common PO/port with conflicting native vlan 2. Delete conflicting ctag (that are configured wrongly and the vlan that needs to be configured as native vlan but isnt configured as one) using EPG update "ctag-range-delete" operation 3. Add ctag back with correct native vlan (to be configured on SLX) using EPG update "ctag-range-add" operation 		

Parent Defect ID:	EFA-10075	Issue ID:	EFA-10075
Reason Code:	Already Reported	Severity:	S3 - Medium
Product:	Extreme Fabric Automation	Reported in Release:	EFA 2.4.6
Symptom:	When the EFA created port-channel is deleted (manually on the SLX), re-created (manually on the SLX) without member ports, with some port-channel config drift (e.g. po speed), then the DRC doesn't identify any config drift.		

Parent Defect ID:	EFA-10075	Issue ID:	EFA-10075
Condition:	Below are the steps to reproduce the issue: 1. Create Port-channel on the SLX using EFA 2. Delete the port-channel from the SLX manually 3. Re-create port-channel on the SLX manually with drifted speed configuration 4. Perform DRC without reconciliation		
Recovery:	Delete the port-channel manually on SLX and trigger DRC from EFA		

Parent Defect ID:	EFA-10088	Issue ID:	EFA-10088
Reason Code:	Already Implemented	Severity:	S1 - Critical
Product:	Extreme Fabric Automation	Reported in Release:	EFA 2.5.0
Symptom:	A running TPVM is uninstalled after completing a downgrade fullinstall firmware download followed by an upgrade fullinstall firmware download between SLXOS versions 20.3.2a and 20.2.3f.		
Condition:	Perform a downgrade fullinstall firmware download followed by an upgrade fullinstall firmware download between SLXOS versions 20.3.2a and 20.2.3f.		

Parent Defect ID:	EFA-10307	Issue ID:	EFA-10307
Reason Code:	Already Reported	Severity:	S3 - Medium
Product:	Extreme Fabric Automation	Reported in Release:	EFA 2.5.1
Symptom:	Unable to login to efa after fresh installation.		
Condition:	During installation, if a wrong peer-ip input is given and then changed to a correct IP.		
Recovery:	Re-install EFA with correct set of inputs.		

Parent Defect ID:	EFA-10443	Issue ID:	EFA-10443
Reason Code:	Configuration/User Error	Severity:	S3 - Medium
Product:	Extreme Fabric Automation	Reported in Release:	EFA 2.5.0
Symptom:	EFA journal failure when running miniscale (x100 cirros VMs) heat stack.		

Parent Defect ID:	EFA-10457	Issue ID:	EFA-10457
Reason Code:	Working as Designed	Severity:	S4 - Low
Product:	Extreme Fabric Automation	Reported in Release:	EFA 2.4.4
Symptom:	EPG in epg-delete-pending state when deleting an epg during maintenance		

Parent Defect ID:	EFA-10465	Issue ID:	EFA-10465
Reason Code:	Not Reproducible	Severity:	S2 - High
Product:	Extreme Fabric Automation	Reported in Release:	EFA 2.5.0

Parent Defect ID:	EFA-10465	Issue ID:	EFA-10465
Symptom:	EFA sync execute got hung		
Condition:	EFA sync execute got hung		

Parent Defect ID:	EFA-10500	Issue ID:	EFA-10500
Reason Code:	Already Reported	Severity:	S2 - High
Product:	Extreme Fabric Automation	Reported in Release:	EFA 2.5.1
Symptom:	Drift-reconcile failed after EFA restore - Failed to remove breakout for port		
Condition:	Drift-reconcile failed after EFA restore - Failed to remove breakout for port		

Parent Defect ID:	EFA-10507	Issue ID:	EFA-10507
Reason Code:	Not a Software Defect	Severity:	S3 - Medium
Product:	Extreme Fabric Automation	Reported in Release:	EFA 2.5.1
Symptom:	EFA becomes unstable after TPVM hostname change		
Condition:	TPVM hostnames with special characters		

Parent Defect ID:	EFA-10546	Issue ID:	EFA-10546
Reason Code:	Already Reported	Severity:	S3 - Moderate
Product:	Extreme Fabric Automation	Reported in Release:	EFA 2.5.1
Symptom:	.EFA - Misleading failed message during upgrade		

Parent Defect ID:	EFA-10550	Issue ID:	EFA-10550
Reason Code:	Already Implemented	Severity:	S3 - Moderate
Product:	Extreme Fabric Automation	Reported in Release:	EFA 2.5.1
Symptom:	EFA - Invalid credentials after SLX reload.		

Parent Defect ID:	EFA-10555	Issue ID:	EFA-10555
Reason Code:	Already Implemented	Severity:	S3 - Moderate
Product:	Extreme Fabric Automation	Reported in Release:	EFA 2.5.1
Symptom:	Commands in EFA fail but a zero result code is returned, which means success		

Parent Defect ID:	EFA-10557	Issue ID:	EFA-10557
Reason Code:	Third Party Issue	Severity:	S2 - Major
Product:	Extreme Fabric Automation	Reported in Release:	EFA 2.5.1
Symptom:	Customer build path contains "-S" which leads to enter sanity path again and again during FWDL.		

Parent Defect ID:	EFA-10557	Issue ID:	EFA-10557
	(Fixed in SLX-20.3.3)		

Parent Defect ID:	EFA-10684	Issue ID:	EFA-10684
Reason Code:	Not a Software Defect	Severity:	S2 - Major
Product:	Extreme Fabric Automation	Reported in Release:	EFA 2.5.1
Symptom:	EFA cannot start - Init:ErrImageNeverPull		

Parent Defect ID:	EFA-10692	Issue ID:	EFA-10692
Reason Code:	Working as Designed	Severity:	S3 - Moderate
Product:	Extreme Fabric Automation	Reported in Release:	EFA 2.5.2
Symptom:	efa inventory device update is logging password in plain text		

Open Defects

The following defects are open in Extreme Fabric Automation 2.5.3.

Parent Defect ID:	EFA-5592	Issue ID:	EFA-5592
Severity:	S2 - High		
Product:	Extreme Fabric Automation	Reported in Release:	EFA 2.2.0
Symptom:	Certificates need to be manually imported on replaced equipment in-order to perform RMA.		
Condition:	RMA/replaced equipment will not have ssh key and auth certificate, in-order to replay the configuration on new switch user needs to import the certificates manually.		
Workaround:	import certificate manually efa certificates device install --ips x,y --certType		

Parent Defect ID:	EFA-8297	Issue ID:	EFA-8297
Severity:	S3 - Medium		
Product:	Extreme Fabric Automation	Reported in Release:	EFA 2.4.0
Symptom:	EPG update anycast-ip-delete operation succeeded for deletion of provisioned anycast-ip for admin-down device. This issue is observed only if an update anycast-ip-add operation is performed after device is put in admin down state and the new config is in non-provisioned state followed by anycast-ip-delete operation for already configured anycast-ip.		

Parent Defect ID:	EFA-8297	Issue ID:	EFA-8297
Condition:	Steps to reproduce issue: 1) Configure EPG with anycast-ip (ipv4/ipv6) 2) Make one device admin-down 3) Anycast-ip update-add new anycast-ip (ipv6/ipv4) 4) Update-delete provisioned anycast-ip configured in step-1 (ipv4/ipv6) Step (4) should fail as IP is already configured on the device and trying to delete it should fail as part of APS.		
Workaround:	No workaround for this.		
Recovery:	Recovery can be done by configuring EPG again with the required configuration using efa or cleaning device config for anycast-ip on the switch.		

Parent Defect ID:	EFA-8535	Issue ID:	EFA-8535
Severity:	S3 - Medium		
Product:	Extreme Fabric Automation	Reported in Release:	EFA 2.4.0
Symptom:	On a single-node installation of TPVM, after ip-change, EFA is not operational.		
Condition:	After IP change of the host system, if 'efa-change-ip' script is run by a different user other than the installation user, in that case, EFA is not operational.		
Workaround:	Restart k3s service using the command 'sudo systemctl restart k3s'		

Parent Defect ID:	EFA-8904	Issue ID:	EFA-8904
Severity:	S2 - High		
Product:	Extreme Fabric Automation	Reported in Release:	EFA 2.4.2
Symptom:	Single node deployment fails with 'DNS resolution failed.'		
Condition:	After a multi-node deployment and then un-deployment is done on a server, if single-node deployment is tried on the same server, the installer exits with the error, 'DNS resolution failed.'		
Workaround:	After un-deployment of the multi-node installation, perform a reboot of the server/ TPVM.		

Parent Defect ID:	EFA-9010	Issue ID:	EFA-9010
Severity:	S2 - High		
Product:	Extreme Fabric Automation	Reported in Release:	EFA 2.4.2
Symptom:	Creation of 100 Openstack VM/stacks fails at the rate of 10 stacks/min One stack has 1 VM , 2 networks and 3 Ports (2 dhcp and one nova port)		

Parent Defect ID:	EFA-9010	Issue ID:	EFA-9010
Condition:	100 openstack stacks created at the rate of 10 stacks/min are sent to the EFA. The EFA processing requests at such high case results in overwhelming the CPU, Since the EFA cannot handle requests at such high rates, backlog of requests are created. This eventually results in VM reschedules and failure to complete some stacks with errors.		
Workaround:	100 openstack stacks can be created with lower rate of creation consistently eg 3 stacks/min		
Recovery:	Delete the failed or all openstack stacks and create them at lower rate of creation e.g 3 stacks/min		

Parent Defect ID:	EFA-9065	Issue ID:	EFA-9065
Severity:	S2 - High		
Product:	Extreme Fabric Automation	Reported in Release:	EFA 2.4.3
Symptom:	EFA Port Channel remains in cfg-refreshed state when the port-channel is created immediately followed by the EPG create using that port-channel		
Condition:	Below are the steps to reproduce the issue: 1. Create port-channel po1 under the ownership of tenant1 2. Create endpoint group with po1 under the ownership of tenant1 3. After step 2 begins and before step 2 completes, the raslog event w.r.t. step 1 i.e. port-channel creation is received. This Raslog event is processed after step 2 is completed		
Recovery:	1. Introduce switchport or switchport-mode drift on the SLX for the port-channel which is in cfg-refreshed state 2. Perform manual DRC to bring back the cfg-refreshed port-channel back to cfg-in-sync		

Parent Defect ID:	EFA-9439	Issue ID:	EFA-9439
Severity:	S2 - High		
Product:	Extreme Fabric Automation	Reported in Release:	EFA 2.5.0
Symptom:	Dev-State and App-State of EPG Networks are not-provisioned and cfg-ready		
Condition:	Below are the steps to reproduce the issue: 1) Create VRF with local-asn 2) Create EPG using the VRF created in step 1 3) Take one of the SLX devices to administratively down state 4) Perform VRF Update "local-asn-add" to different local-asn than the one configured during step 1 5) Perform VRF Update "local-asn-add" to the same local-asn that is configured during step 1 6) Admin up the SLX device which was made administratively down in step 3 and wait for DRC to complete		

Parent Defect ID:	EFA-9439	Issue ID:	EFA-9439
Workaround:	No workaround as such.		
Recovery:	Following are the steps to recover: 1) Log in to SLX device which was made admin down and then up 2) Introduce local-asn configuration drift under "router bgp address-family ipv4 unicast" for the VRF 3) Execute DRC for the device		

Parent Defect ID:	EFA-9456	Issue ID:	EFA-9456
Severity:	S3 - Medium		
Product:	Extreme Fabric Automation	Reported in Release:	EFA 2.4.3
Symptom:	Issue is seen when the devices which are being added to fabric have IP addresses already configured on interfaces and are conflicting with what EFA assigns.		
Condition:	Issue will be observed if devices being added to fabric have IP addresses assigned on interfaces and these IP addresses are already reserved by EFA for other devices.		
Workaround:	Delete the IP addresses on interfaces of devices having conflicting configuration so that new IP addresses can be reserved for these devices. One way to clear the device configuration is using below commands: 1. Register the device with inventory efa inventory device register --ip <ip1, ip2> --username admin --password password 2. Issue debug clear "efa fabric debug clear-config --device <ip1, ip2>"		
Recovery:	Delete the IP addresses on interfaces of devices having conflicting configuration so that new IP addresses can be reserved for these devices. One way to clear the device configuration is using below commands: 1. Register the device with inventory efa inventory device register --ip <ip1, ip2> --username admin --password password 2. Issue debug clear "efa fabric debug clear-config --device <ip1, ip2>" 3. Add the devices to fabric		

Parent Defect ID:	EFA-9570	Issue ID:	EFA-9570
Severity:	S2 - High		
Product:	Extreme Fabric Automation	Reported in Release:	EFA 2.5.0
Symptom:	Add Device Failed because ASN used in border leaf showing conflict		
Condition:	If there are more than one pair of Leaf/border leaf devices then devices which are getting added first will get the first available ASN in ascending order and in subsequent addition of devices if one of device is trying to allocate the same ASN because of brownfield scenario then EFA will throw an error of conflicting ASN		

Parent Defect ID:	EFA-9570	Issue ID:	EFA-9570
Workaround:	Add the devices to fabric in following sequence 1)First add brownfield devices which have preconfigured configs 2)Add remaining devices which don't have any configs stored		
Recovery:	Removing the devices and adding the devices again to fabric in following sequence 1)First add brownfield devices which have preconfigured configs 2)Add remaining devices which don't have any configs stored		

Parent Defect ID:	EFA-9576	Issue ID:	EFA-9576
Severity:	S2 - High		
Product:	Extreme Fabric Automation	Reported in Release:	EFA 2.5.0
Symptom:	Deletion of the tenant by force followed by the recreation of the tenant and POs can result in the error "Po number <id> not available on the devices".		
Condition:	Below are the steps to reproduce the issue: 1. Create tenant and PO. 2. Delete the tenant using the "force" option. 3. Recreate the tenant and recreate the PO in the short time window.		
Workaround:	Avoid performing tenant/PO create followed by tenant delete followed by the tenant and PO recreate in the short time window.		
Recovery:	Execute inventory device prior to the PO creation.		

Parent Defect ID:	EFA-9591	Issue ID:	EFA-9591
Severity:	S2 - High		
Product:	Extreme Fabric Automation	Reported in Release:	EFA 2.5.0
Symptom:	When certain BGP sessions are not in ESTABLISHED state after clearing the BGP sessions as part of fabric configure, we see this issue.		
Condition:	This condition was seen when "efa fabric configure --name <fabric name>" was issued after modifying the MD5 password.		
Workaround:	Wait for BGP sessions to be ready. Check the status of BGP sessions using "efa fabric topology show underlay --name <fabric name>"		
Recovery:	Wait for BGP sessions to be ready. Check the status of BGP sessions using "efa fabric topology show underlay --name <fabric name>"		

Parent Defect ID:	EFA-9645	Issue ID:	EFA-9645
Severity:	S2 - High		
Product:	Extreme Fabric Automation	Reported in Release:	EFA 2.5.0
Symptom:	When the fabric setting is updated with this particular password "password\$\n", md5 password doesn't get configured on the backup routing neighbors that was already created.		

Parent Defect ID:	EFA-9645	Issue ID:	EFA-9645
Condition:	1. Configure fabric 2. Create tenant, po, vrf and epg 3. Update fabric setting with "password\$\n" and configure fabric 4. MD5 password is not configured on backup routing neighbors under BGP address family ipv4/ipv6 vrf		
Workaround:	Update the fabric setting with any other password combination that does not include "\$\n" combination.		
Recovery:	Update the fabric setting with any other password combination that does not include "\$\n" combination.		

Parent Defect ID:	EFA-9674	Issue ID:	EFA-9674
Severity:	S3 - Medium		
Product:	Extreme Fabric Automation	Reported in Release:	EFA 2.4.2
Symptom:	Creation and deletion of stacks can result in failure. Network create fails as the previous network with same VLAN is not deleted.		
Condition:	Network is deleted and created in quick succession. Since the EFA processing takes time to delete the network at EFA, another call made for network create with same vlan id is also processed. This network create call will end in failure.		
Workaround:	Add delay between delete and create of stacks to allow more time for efa processing.		
Recovery:	Cleanup and recreate the failed network/stack at openstack		

Parent Defect ID:	EFA-9758	Issue ID:	EFA-9758
Severity:	S2 - High		
Product:	Extreme Fabric Automation	Reported in Release:	EFA 2.5.0
Symptom:	When user modifies the remote-asn of BGP peer out of band, drift and reconcile is not reconciling the intended remote-asn of BGP peer configuration.		
Condition:	Issue will seen if the user modifies the remote ASN of BGP peer through out of band means, DRC is not reconciling the remote ASN.		
Workaround:	Login to the device where the remote ASN is modified and revert it back to what EFA has configured.		
Recovery:	Revert the remote ASN of BGP peer on the device through SLX CLI to what EFA has configured previously.		

Parent Defect ID:	EFA-9799	Issue ID:	EFA-9799
Severity:	S3 - Medium		
Product:	Extreme Fabric Automation	Reported in Release:	EFA 2.5.0
Symptom:	'efa status' response shows standby node status as 'UP' when node is still booting up		

Parent Defect ID:	EFA-9799	Issue ID:	EFA-9799
Condition:	If SLX device is reloaded where EFA standby node resides, then 'efa status' command will still show the status of standby as UP.		
Workaround:	Retry the same command after sometime.		

Parent Defect ID:	EFA-9874	Issue ID:	EFA-9874
Severity:	S3 - Medium		
Product:	Extreme Fabric Automation	Reported in Release:	EFA 2.5.0
Symptom:	When EPG is in the "anycast-ip-delete-pending" state and the user performs "epg configure", it will succeed without actually removing anycast-ip from SLX.		
Condition:	Below are the steps to reproduce the issue: 1) Configure EPG with VRF, VLAN and anycast-ip (ipv4/ipv6) on a single rack Non-CLOS fabric. 2) Bring one of the devices to admin-down. 3) EPG Update anycast-ip-delete for anycast-ip ipv4 or ipv6. This will put EPG in "anycast-ip-delete-pending" state. 4) Bring the admin-down device to admin-up. 5) In this state, the only allowed operations on EPG are "epg configure" and EPG update "anycast-ip-delete". 6) Perform "epg configure --name <epg-name> --tenant <tenant-name>".		
Workaround:	No workaround.		
Recovery:	Perform the same anycast-ip-delete operation when both devices are admin-up.		

Parent Defect ID:	EFA-9906	Issue ID:	EFA-9906
Severity:	S2 - High		
Product:	Extreme Fabric Automation	Reported in Release:	EFA 2.5.0
Symptom:	When concurrent EFA tenant EPG create or update operation is requested where the commands involve large number of vlans and/or ports, one of them could fail with the error "EPG: <epg-name> Save for Vlan Records save Failed".		
Condition:	The failure is reported when concurrent DB write operation are done by EFA Tenant service as part of the command execution.		
Workaround:	This is a transient error and there is no workaround. The failing command can be executed once again and it will succeed.		
Recovery:	The failing command can be rerun separately and it will succeed.		

Parent Defect ID:	EFA-9907	Issue ID:	EFA-9907
Severity:	S2 - High		
Product:	Extreme Fabric Automation	Reported in Release:	EFA 2.5.0

Parent Defect ID:	EFA-9907	Issue ID:	EFA-9907
Symptom:	When concurrent EFA tenant EPG update port-add or port-delete operation is requested where the commands involve large number of vlans and/or ports, one of them could fail with the error "vni in use error".		
Condition:	The failure is reported when Tenant service gets stale information about a network that existed a while back but not now. This happens only when the port-add and port-delete are done in quick succession		
Workaround:	Avoid executing port-add and port-delete of same ports in quick succession and in concurrence.		
Recovery:	None		

Parent Defect ID:	EFA-9930	Issue ID:	EFA-9930
Severity:	S2 - High		
Product:	Extreme Fabric Automation	Reported in Release:	EFA 2.5.0
Symptom:	Periodic backup happens according to the system timezone.		
Condition:	If the nodes in HA are not configured in the same timezone, then periodic backup is scheduled according to the timezone of the active node. When a failover happens, the schedule is changed to the timezone of the new active node.		
Workaround:	Configure the same timezone on both the nodes in a multi-node installation		

Parent Defect ID:	EFA-9952	Issue ID:	EFA-9952
Severity:	S2 - High		
Product:	Extreme Fabric Automation	Reported in Release:	EFA 2.5.0
Symptom:	When concurrent EFA tenant EPG delete operations are requested where the commands involve large number of vlans and/or ports, one of them could fail with the error "EPG network-property delete failed"		
Condition:	The failure is reported when concurrent DB write operation are done by EFA Tenant service as part of the command execution.		
Workaround:	This is a transient error and there is no workaround. The failing command can be executed once again and it will succeed.		
Recovery:	The failing command can be rerun separately and it will succeed		

Parent Defect ID:	EFA-10026	Issue ID:	EFA-10026
Severity:	S3 - Medium		
Product:	Extreme Fabric Automation	Reported in Release:	EFA 2.5.0
Symptom:	'efa inventory device interface unset-fec' command will set the fec mode to 'auto-negotiation' instead of removing fec configuration.		

Parent Defect ID:	EFA-10026	Issue ID:	EFA-10026
Condition:	Once fec mode is set on the interface, the configuration cannot be removed. 'efa inventory device interface unset-fec' command will set the fec mode to 'auto-negotiation' instead of removing fec configuration. This is because 'no fec mode' command is no longer supported on SLX.		
Workaround:	Default value for fec-mode is 'auto-negotiation' and will show up as-is in the output of 'show running-config'. Users can set a different value using 'efa inventory device interface set-fec', if required.		
Recovery:	Default value for fec-mode is 'auto-negotiation' and will show up as-is in the output of 'show running-config'. Users can set a different value using 'efa inventory device interface set-fec', if required.		

Parent Defect ID:	EFA-10048	Issue ID:	EFA-10048
Severity:	S2 - High		
Product:	Extreme Fabric Automation	Reported in Release:	EFA 2.5.0
Symptom:	EPG: epgev10 Save for devices failed When concurrent EFA tenant EPG create or update operation is requested where the commands involve large number of vlans and/or ports, one of them could fail with the error "EPG: <epg-name> Save for devices Failed".		
Condition:	The failure is reported when concurrent DB write operation are done by EFA Tenant service as part of the command execution.		
Workaround:	This is a transient error and there is no workaround. The failing command can be executed once again and it will succeed.		
Recovery:	The failing command can be rerun separately and it will succeed.		

Parent Defect ID:	EFA-10062	Issue ID:	EFA-10062
Severity:	S3 - Medium		
Product:	Extreme Fabric Automation	Reported in Release:	EFA 2.5.0
Symptom:	Removing device from Inventory would not clean up breakout configuration on interfaces that are part of port channels.		
Condition:	This condition occurs when there is breakout configuration present on device that is being deleted from EFA Inventory, such that those breakout configurations are on interfaces that are part of port-channels		
Workaround:	Manually remove the breakout configuration, if required.		
Recovery:	Manually remove the breakout configuration, if required.		

Parent Defect ID:	EFA-10063	Issue ID:	EFA-10063
Severity:	S3 - Medium		
Product:	Extreme Fabric Automation	Reported in Release:	EFA 2.5.0

Parent Defect ID:	EFA-10063	Issue ID:	EFA-10063
Symptom:	Deleting device from EFA Inventory would not bring up interface to admin state 'up' after unconfiguring breakout configuration		
Condition:	This condition occurs when there is breakout configuration present on device that is being deleted from EFA Inventory		
Workaround:	Manually bring the admin-state up on the interface, if required		
Recovery:	Manually bring the admin-state up on the interface, if required		

Parent Defect ID:	EFA-10093	Issue ID:	EFA-10093
Severity:	S3 - Medium		
Product:	Extreme Fabric Automation	Reported in Release:	EFA 2.5.0
Symptom:	Deletion of the VLAN/BD based L3 EPGs in epg-delete-pending state will result in creation and then deletion of the VLAN/BD on the admin up device where the VLAN/BD was already removed		
Condition:	Issue occurs with the below steps: 1. Create L3 EPG with VLAN/BD X on an MCT pair 2. Admin down one of the devices of the MCT pair 3. Delete the L3 EPG. This results in the L3 configuration removal (corresponding to the L3 EPG getting deleted) from the admin up device and no config changes happen on the admin down device and the EPG transits to epg-delete-pending state 4. Admin up the device which was made admin down in step 2 5. Delete the L3 EPG which transited to epg-delete-pending state in step 3		
Recovery:	Not needed		

Parent Defect ID:	EFA-10110	Issue ID:	EFA-10110
Severity:	S2 - High		
Product:	Extreme Fabric Automation	Reported in Release:	EFA 2.5.0
Symptom:	EFA fabric and tenant operations are not blocked when (manual) DRC operation is triggered and in-progress.		
Condition:	DRC operations may fail/timeout with fabric/tenant operations taking longer time to complete.		
Workaround:	Do not run fabric configure or tenant operations when manual DRC for a device is in progress.		

Parent Defect ID:	EFA-10252	Issue ID:	EFA-10252
Severity:	S2 - High		
Product:	Extreme Fabric Automation	Reported in Release:	EFA 2.5.1

Parent Defect ID:	EFA-10252	Issue ID:	EFA-10252
Symptom:	When concurrent EFA tenant EPG update port-group-add operations are requested where the tenant is bridge-domain enabled, one of them may fail with the error "EPG network-property delete failed"		
Condition:	The failure is reported when concurrent resource allocations by EFA Tenant service as part of the command execution.		
Workaround:	This is a transient error and there is no workaround. The failing command can be executed once again and it will succeed.		
Recovery:	The failing command can be rerun separately and it will succeed		

Parent Defect ID:	EFA-10268	Issue ID:	EFA-10268
Severity:	S2 - High		
Product:	Extreme Fabric Automation	Reported in Release:	EFA 2.5.1
Symptom:	When concurrent EPG deletes on bd-enabled tenant are requested where the EPGs involve large number of vlans, local-ip and anycast-ip addresses, one of them may fail with the error "EPG: <epg-name> Save for Vlan Records save Failed".		
Condition:	The failure is reported when concurrent DB write operation are done by EFA Tenant service as part of the command execution.		
Workaround:	This is a transient error and there is no workaround. The failing command can be executed once again and it will succeed.		
Recovery:	The failing command can be rerun separately and it will succeed.		

Parent Defect ID:	EFA-10288	Issue ID:	EFA-10288
Severity:	S2 - High		
Product:	Extreme Fabric Automation	Reported in Release:	EFA 2.5.1
Symptom:	<p>The bgp peer gets deleted from the SLX but not from EFA. This issue is seen when the following sequence is performed.</p> <ol style="list-style-type: none"> 1. Create static bgp peer 2. Admin down one of the devices 3. Update the existing bgp static peer by adding a new peer 4. Update the existing bgp static peer by deleting the peers which were first created in step1. Delete from both devices 5. Admin up the device 6. efa tenant service bgp peer configure --name "bgp-name" --tenant "tenant-name" <p>Once the bgp peer is configured, the config is deleted from the switch for the device which is in admin up state whereas EFA still has this information and displays it during bgp peer show</p>		
Condition:	When a bgp peer is created and update operations are performed when one of the devices are in admin down state, the configuration for the admin up device is deleted from the slx switch but remains in efa when "efa tenant service bgp peer configure --name <name> --tenant <tenant>" is performed.		

Parent Defect ID:	EFA-10288	Issue ID:	EFA-10288
Workaround:	Delete the peer for admin up device first and then delete the peer from admin down device as a separate cli command.		
Recovery:	Perform a drift reconcile operation for the admin up device so that the configuration gets reconciled on the switch.		

Parent Defect ID:	EFA-10371	Issue ID:	EFA-10371
Severity:	S2 - High		
Product:	Extreme Fabric Automation	Reported in Release:	EFA 2.5.1
Symptom:	Additional Route Target is seen under VRF "address-family ipv6 unicast"		
Workaround:	No workaround		
Recovery:	Below are the steps to recover from the issue: 1. Delete VRF from all EndpointGroups by performing EPG Update <vrf-delete> operation 2. Add VRF to EndpointGroups by performing EPG Update <vrf-add> operation		

Parent Defect ID:	EFA-10387	Issue ID:	EFA-10387
Severity:	S2 - High		
Product:	Extreme Fabric Automation	Reported in Release:	EFA 2.5.1
Symptom:	-EFA OVA services not starting if no IP address is obtained on bootup.		
Condition:	When EFA OVA is deployed, and does not obtain a DHCP IP address, not all EFA services will start		
Workaround:	Configure static IP, or obtain IP address from DHCP. cd /opt/godcapp/efa type: source deployment.sh When the EFA installer appears, select Upgrade/Re-deploy Select OK Select single node, Select OK Select the default of No for Additional management networks. Select yes when prompted to redeploy EFA. Once EFA has redeployed, all services should start		

Parent Defect ID:	EFA-10389	Issue ID:	EFA-10389
Severity:	S3 - Medium		
Product:	Extreme Fabric Automation	Reported in Release:	EFA 2.5.1
Symptom:	When upgrade process is quit at any possible stage, older EFA stack doesn't get identified from the same node on which process has been initiated.		

Parent Defect ID:	EFA-10389	Issue ID:	EFA-10389
Condition:	If user selects "No" when EFA asks for final confirmation before upgrade process gets started, the process gets terminated, but older stack can't be identified any longer on SLX. Checking "show efa status" reflects "EFA application is not installed. Exiting..." However there is no functional impact on EFA setup and EFA setup continues to work properly on TPVMs with existing version.		
Workaround:	Upgrade process can be initiated again from peer node		

Parent Defect ID:	EFA-10397	Issue ID:	EFA-10397
Severity:	S3 - Medium		
Product:	Extreme Fabric Automation	Reported in Release:	EFA 2.5.0
Symptom:	Native Vlan gets added as trunk VLAN to ports/ port channels after DRC is executed		
Condition:	<ol style="list-style-type: none"> 1. Create EPG1 with PO1 and switchport mode trunk with native VLAN V1. 2. Create EPG2 with the same PO as used in step1 i.e. PO1 and new port channel PO2 . Switchport mode is configured as trunk without native VLAN. 3. Execute Manual/auto DRC . 4. Native VLAN V1 gets added as trunk VLAN to PO2, on the SLX. 		
Recovery:	<ol style="list-style-type: none"> 1.Introduce manual drift on SLX by executing "no switchport" on port channels which are not intended to have Native VLAN as trunk VLAN. 2.Perform manual/auto DRC. 3. After DRC execution only the required VLAN members will be added to the port-channel. Native VLAN will be removed from the not intended port channels 		

Parent Defect ID:	EFA-10398	Issue ID:	EFA-10398
Severity:	S2 - High		
Product:	Extreme Fabric Automation	Reported in Release:	EFA 2.5.1
Symptom:	EFA Tenant REST Request fails with an error "service is not available or internal server error has occurred, please try again later"		
Condition:	Execution of the EFA Tenant REST requests which take more time (more than 15 minutes) to get completed		
Workaround:	Execute "show" commands to verify if the failed REST request was indeed completed successfully. Re-execute the failed REST request as applicable.		
Recovery:	No recovery		

Parent Defect ID:	EFA-10403	Issue ID:	EFA-10403
Severity:	S2 - Major		
Product:	Extreme Fabric Automation	Reported in Release:	EFA 2.5.1
Symptom:	EFA fabric state shows as "cfg-refreshed", and there is drift in the configuration identified by EFA compare with SLX.		

Parent Defect ID:	EFA-10403	Issue ID:	EFA-10403
Condition:	when EFA is upgraded to 2.5.1, with configured BFD and MCT clusters.		
Workaround:	None		
Recovery:	Execute Manual Drift/Reconcile step, EFA fabric state shows as "cfg-sync", and all the configurations are in sync between EFA and SLX.		

Parent Defect ID:	EFA-10445	Issue ID:	EFA-10445
Severity:	S2 - High		
Product:	Extreme Fabric Automation	Reported in Release:	EFA 2.5.0
Symptom:	When continuous EPG updates with repeated local-ip-add and local-ip-delete operations are done on same EPG repeatedly without much gap in-between, Tenant service may occasionally reject subsequent local-ip-add command incorrectly.		
Condition:	When continuous EPG updates with repeated local-ip-add and local-ip-delete operations are done on same EPG repeatedly without much gap in-between, Tenant service may occasionally retain stale information about the previously created IP configuration and reject subsequent local-ip-add command incorrectly.		
Workaround:	There is no work-around to avoid this. Once the issue is hit, user may use a new local-ip-address from another subnet.		
Recovery:	<p>Follow the steps below to remove the stale IP address from Tenant's knowledge base:</p> <ol style="list-style-type: none"> 1. Find the management IP for the impacted devices. this is displayed in the EFA error message 2. Find the interface VE number. This is same as the CTAG number that the user was trying to associate the local-ip with 3. Telnet/SSH to the device management IP and login with admin privilege 4. Set the local IP address in the device <pre>configure t interface ve <number> ip address <local-ip></pre> <ol style="list-style-type: none"> 5. Do EFA device update by executing 'efa inventory device update --ip <IP> and wait for a minute for the information to be synchronized with Tenant service database 6. Reset the local IP address in the device <pre>configure t interface ve <number> no ip address</pre> <ol style="list-style-type: none"> 7. Do EFA device update and wait for a minute for the information to be synchronized with Tenant service database <p>These steps will remove the stale entries and allow future local-ip-add operation to be successful.</p>		

Parent Defect ID:	EFA-10455	Issue ID:	EFA-10455
Severity:	S3 - Moderate		
Product:	Extreme Fabric Automation	Reported in Release:	EFA 2.5.1
Symptom:	"efa status" takes several minutes longer than expected to report a healthy EFA status.		

Parent Defect ID:	EFA-10455	Issue ID:	EFA-10455
Condition:	This problem happens when kubernetes is slow to update the standby node's Ready status. This may be a bug in the shipped version of kubernetes.		
Recovery:	EFA will recover after a period of several minutes.		

Parent Defect ID:	EFA-10507	Issue ID:	EFA-10507
Severity:	S3 - Moderate		
Product:	Extreme Fabric Automation	Reported in Release:	EFA 2.5.1
Symptom:	EFA becomes unstable after TPVM hostname change		
Condition:	TPVM hostnames with special characters		

Parent Defect ID:	EFA-10548	Issue ID:	EFA-10548
Severity:	S2 - High		
Product:	Extreme Fabric Automation	Reported in Release:	EFA 2.5.2
Symptom:	When EPG delete operations are done concurrently for EPGs that are on bridge-domain based tenant where the EPG was created with more number of bridge-domains, one of the command may fail with the error "EPG: <epg name> Update for pw-rofile Record save Failed".		
Condition:	The failure is reported when concurrent DB write operation are done by EFA Tenant service as part of the command execution causing the underlying database to report error for one of operation.		
Workaround:	This is a transient error that can rarely happen and there is no workaround. The failing command can be executed once again and it will succeed.		
Recovery:	The failing command can be rerun separately and it will succeed.		

Parent Defect ID:	EFA-10560	Issue ID:	EFA-10560
Severity:	S3 - Moderate		
Product:	Extreme Fabric Automation	Reported in Release:	EFA 2.5.1
Symptom:	VRF goes to "vrf-device-srbfd-delete-pending" after the execution of vrf update static-route-bfd-add operation with invalid source IP or invalid destination IP.		

Parent Defect ID:	EFA-10560	Issue ID:	EFA-10560
Condition:	1. Create VRF VRF1 and update VRF1 with static-route-bfd-add operation. 2. Provide the below payload with invalid IP address containing leading zeroes during static-route-bfd-add operation. --ipv4-static-route-bfd 10.20.61.92,214.5.94.13,214.5.94.02,300,300,3 3. static-route-bfd-add operation fails due to invalid IP and the rollback (delete) operation also fails due to the invalid IP further resulting in "vrf-device-srbfd-delete-pending" state of the VRF.		
Workaround:	Any IP Address with leading zeroes (eg: 214.5.94.02) are not recommended to be provided as user input . The correct IP to be used is 214.5.94.2 instead of 214.5.94.02.		

Parent Defect ID:	EFA-10606	Issue ID:	EFA-10606
Severity:	S3 - Moderate		
Product:	Extreme Fabric Automation	Reported in Release:	EFA 2.5.2
Symptom:	"efa status" takes several minutes longer than expected to report a healthy EFA status.		
Condition:	This problem happens when kubernetes is slow to update the standby node's Ready status. This may be a bug in the shipped version of kubernetes.		
Recovery:	EFA will recover after a period of several minutes.		

Parent Defect ID:	EFA-10715	Issue ID:	EFA-10715
Severity:	S3 - Moderate		
Product:	Extreme Fabric Automation	Reported in Release:	EFA 2.5.3
Symptom:	EFA will incorrectly report static IPs are not configured after the following sequence of steps: add static IPs; remove static IPs; readd same static IPs.		
Workaround:	Confirm the existence of the static IPs on the TPVM by viewing the following file: /apps/efadata/misc/multiaccess/mgmt_static_ips.txt		