



Extreme Intuitive Insights Release Notes

Version 3.4.0

9037899-02 Rev AA
December 2023



Copyright © 2023 Extreme Networks, Inc. All rights reserved.

Legal Notice

Extreme Networks, Inc. reserves the right to make changes in specifications and other information contained in this document and its website without prior notice. The reader should in all cases consult representatives of Extreme Networks to determine whether any such changes have been made.

The hardware, firmware, software or any specifications described or referred to in this document are subject to change without notice.

Trademarks

Extreme Networks and the Extreme Networks logo are trademarks or registered trademarks of Extreme Networks, Inc. in the United States and/or other countries.

All other names (including any product names) mentioned in this document are the property of their respective owners and may be trademarks or registered trademarks of their respective companies/owners.

For additional information on Extreme Networks trademarks, see: www.extremenetworks.com/about-extreme-networks/company/legal/trademarks

Open Source Declarations

Some software files have been licensed under certain open source or third-party licenses.

End-user license agreements and open source declarations can be found at: <https://www.extremenetworks.com/support/policies/open-source-declaration/>

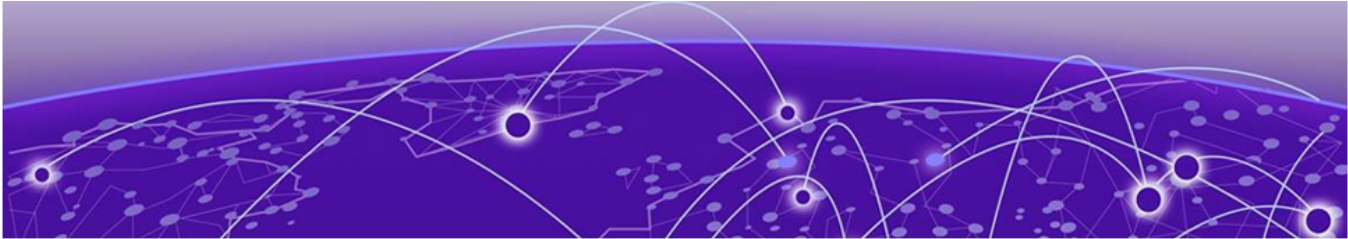


Table of Contents

- General Release Information..... 4**
 - Release Date..... 4
 - Hardware platforms supported..... 4
 - Minimum software required..... 4
 - ExtremeCloud IQ Information..... 4
 - Android Agent Information..... 4
- New Features..... 5**
- Software Fixes..... 7**
 - Known Issues..... 7



General Release Information

Release Date

December 2023

Hardware platforms supported

- Android8-based Zebra Technologies devices:
 - TC51, TC51-HC, TC56, TC70x, TC75x, VC80x, MC3300, MC3300R
- Android10 and 11-based Zebra Technologies devices:
 - TC26, PS20, TC52, TC52-HC, TC57, TC72, TC77, TC8300, VC8300, WT6300, CC600, CC6000, EC30, ET51, ET56, L10A, MC3300x, MC3300xR, MC9300

Minimum software required

- For Android8-based Zebra devices: LifeGuard 08; LifeGuard 23 recommended
- For Android10-based Zebra devices: LifeGuard 79; LifeGuard 106 recommended



Note

Be sure to always be on the latest version available on the Zebra [support web site](#).

ExtremeCloud IQ Information

Extreme Intuitive Insights application is currently available only on a four Remote Data Center (RDC) located in Europe and US. Contact your sales representative for more details.

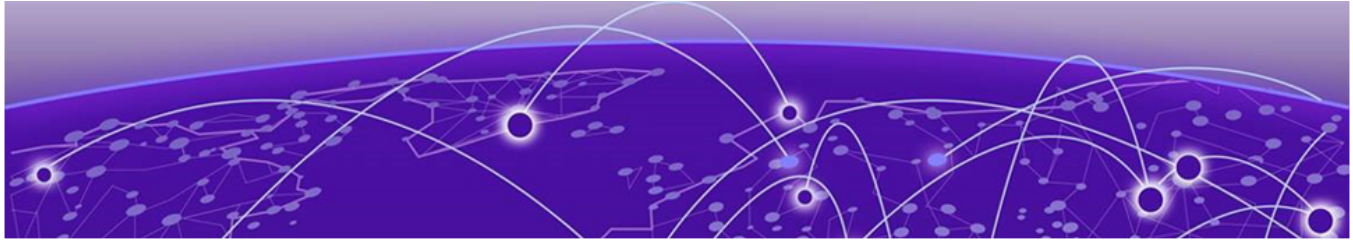


Note

To receive events from Zebra Wireless Insights API, the device needs to have a valid *Zebra Edge Insight standard perpetual license* installed, as well as staged to enable Zebra Wireless Insights API. Contact your Zebra sales representative to order a license. You also need to link the **Extreme Licensing** portal using the **License Manager** application, as well as assign the correct **Role/Application** to the user with the **User Manager** application. See the *Extreme Intuitive Insights Getting Started Guide* for more information.

Android Agent Information

Update the Android agent to the latest version available on the [Extreme Support page](#).



New Features

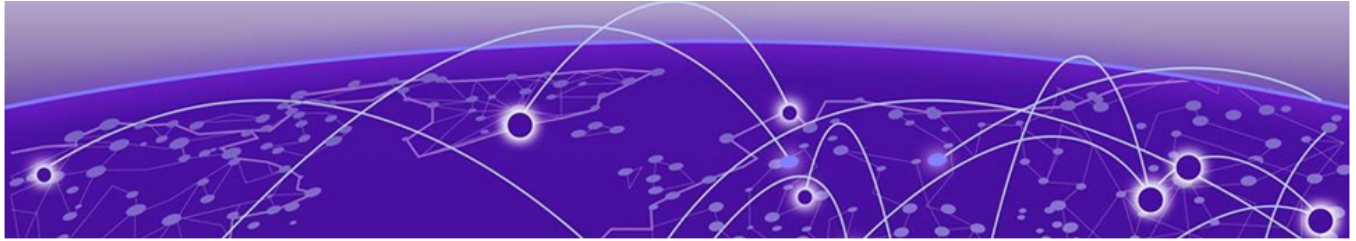
This release introduces the following features:

Table 1: New Features

ID	Description
EII-140	My Reports (A list of scheduled and executed reports) Displays a list of scheduled and executed reports. Reports include: <ul style="list-style-type: none">• Roaming Reports• Loss Prevention Reports• Scheduled Active Analysis
EII-5	Packet capture from EII Support for running Packet Capture from the device. The results are delivered to the Individual Device page in a form of zip file. The maximum time for each packet capture is 15 minutes. It is possible to run up to 5 packet captures on five devices at the same time per account. One Packet Capture file per device is available for download. If a second packet capture runs for the same device, the Packet Capture file is overwritten. The file remains on the Cloud server for 24 hours, then it is deleted permanently. Be sure to download the file within the 24-hour period. There are two options to start packet capture: Management frames and All frames. When All frames is selected, the zip file is password protected. Set the password on a device with Zebra tools.
EII-8	EII - WI API activation needs to be included in the agent. The agent activates the Zebra API automatically upon WI License presence.
EII-212	Reason code information must be provided in event flags. In the Status&Event widget, the Reason information (if available) is provided on the event flag.
EII-213	Roaming Report enhancement. The full list of events in each roaming sequence is presented – beginning with Roaming Started through Roaming Complete or Failed. Reason information is provided when available.

Table 1: New Features (continued)

ID	Description
EII-9	Report scheduling to help with loss device prevention initiative. It is now possible to schedule execution of reports for Loss Prevention daily, weekly, monthly or custom. The report can be delivered to the list of specified email addresses.
EII-249	Device column persistence
EII-223	Dashboard - roaming widget enhancement. Ability to filter the results of the roaming widget on the dashboard.
EII-222	Dashboard - battery widget enhancement. Ability to filter the result of the battery status widget on the dashboard.
EII-246	Battery health column in device list.
EII-281	Roaming and Loss prevention report to be downloaded in csv format.
EII-282	Download option for Roaming Report on individual device page.



Software Fixes

This release introduces the following software fixes:

Table 2: Software Fixes

ID	Description
EII-6	Scheduling analysis stability and representation. In this release, the scheduling control is moved to the cloud. This offers stability in scheduled task execution.

Known Issues

ID	Description
EII-361	WLAN638/669 code must be processed. Beginning with some Zebra software releases of Android 10 and Android 11 (August 2023 and later), the active analysis data is split between two different WLAN codes. Therefore, Extreme Intuitive Insights is not able to correctly decode and represent the results of the Active Voice Analysis.